

Technology in multisplit systems.

With its best in class COP performance, Estia air to water heat pump system delivers more heating power with less energy consumption.

Estia uses high quality components and material which contribute to the overall savings in energy consumption.

With the Toshiba advanced inverter, Estia air to water heat pump system only delivers the heating capacity required; thus consuming only the necessary electricity.

The hot water temperature is also optimized thanks to Toshiba advanced control depending on the outside air temperature. The milder outside, the air-to-water systems automatically produces lower water temperature to anticipate decreased needs of space heating. The same control logic allows to anticipate as well increasing heating needs when weather conditions become extreme; this overall temperature management gives the best conditions of comfort.

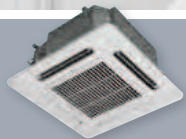
All this saving has a positive impact on the personal electricity bill and the whole community by reducing the CO₂ emissions in the atmosphere.



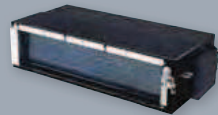
HI-WALL SKV



CONSOLE UPV



CASSETTE SMUV



DUCTED GDV

Residential

INVETER SYSTEMS

MULTI SPLIT



High Quality and savings

Toshiba high quality multi split systems contribute to drastically reduce the operating costs and increase the energy efficiency. The multisplit 5:1 outdoor unit has reached an outstanding COP of 4,24 in nominal conditions and even higher in partial load conditions where the Toshiba Inverters deliver their best performance.

Savings are measured also in term of installation time. Outdoor units are compact, easy to transport and with the long pipe run (up to 80m for the 5:1) can be placed anywhere in your building.

Absolute comfort

Toshiba commitment to people drives a focused attention for the details in every stage of the development process, from design to user field tests. Therefore the products and systems installed feature higher standard of indoor air quality, sound levels, energy savings and environmental awareness.

Special attention has been dedicated to the comfort during the night, with the improvement of the silent operation mode, available in the latest indoor units. This feature uses sensors and logic algorithms to vary and adapt the operating parameters to guarantee a quiet comfortable night.



| Heat Pump | Indoor unit | PKVP | SKV | UFV | GDV | SMUV |
|-----------|-------------|--------------------|--------------|--------------|--------------|---------------|
| | 7 | - | - | - | - | - |
| | 10 | RAS-M10PKVP-E (ND) | RAS-M10SKV-E | RAS-B10UFV-E | RAS-M10GDV-E | - |
| | 13 | RAS-M13PKVP-E (ND) | RAS-M13SKV-E | RAS-B13UFV-E | RAS-M13GDV-E | - |
| | 16 | - | - | - | - | - |
| | 18 | - | - | - | - | - |
| | 22 | - | - | - | - | - |
| | 7 | - | - | - | - | - |
| | 10 | RAS-M10PKVP-E (ND) | RAS-M10SKV-E | RAS-B10UFV-E | RAS-M10GDV-E | RAS-M10SMUV-E |
| | 13 | RAS-M13PKVP-E (ND) | RAS-M13SKV-E | RAS-B13UFV-E | RAS-M13GDV-E | RAS-M13SMUV-E |
| | 16 | RAS-M16PKVP-E (ND) | RAS-M16SKV-E | RAS-B16UFV-E | RAS-M16GDV-E | RAS-M16SMUV-E |
| | 18 | - | - | - | - | - |
| | 22 | - | - | - | - | - |
| | 7 | - | - | - | - | - |
| | 10 | RAS-M10PKVP-E (ND) | RAS-M10SKV-E | RAS-B10UFV-E | RAS-M10GDV-E | RAS-M10SMUV-E |
| | 13 | RAS-M13PKVP-E (ND) | RAS-M13SKV-E | RAS-B13UFV-E | RAS-M13GDV-E | RAS-M13SMUV-E |
| | 16 | RAS-M16PKVP-E (ND) | RAS-M16SKV-E | - | RAS-M16GDV-E | RAS-M16SMUV-E |
| | 18 | - | - | - | - | - |
| | 22 | - | - | - | - | - |
| | 7 | - | RAS-M07SKV-E | - | - | - |
| | 10 | RAS-M10PKVP-E (ND) | RAS-M10SKV-E | RAS-B10UFV-E | RAS-M10GDV-E | RAS-M10SMUV-E |
| | 13 | RAS-M13PKVP-E (ND) | RAS-M13SKV-E | RAS-B13UFV-E | RAS-M13GDV-E | RAS-M13SMUV-E |
| | 16 | RAS-M16PKVP-E (ND) | RAS-M16SKV-E | - | RAS-M16GDV-E | RAS-M16SMUV-E |
| | 18 | RAS-M18PKVP-E (ND) | - | RAS-B18UFV-E | - | - |
| | 22 | - | RAS-M22SKV-E | - | - | - |
| | 7 | - | - | - | - | - |
| | 10 | - | RAS-M10SKV-E | RAS-B10UFV-E | RAS-M10GDV-E | RAS-M10SMUV-E |
| | 13 | - | RAS-M13SKV-E | RAS-B13UFV-E | RAS-M13GDV-E | RAS-M13SMUV-E |
| | 16 | - | RAS-M16SKV-E | - | RAS-M16GDV-E | RAS-M16SMUV-E |
| | 18 | - | - | - | - | - |
| | 22 | - | - | - | - | - |
| | 7 | - | RAS-M07SKV-E | - | - | - |
| | 10 | RAS-M10PKVP-E (ND) | RAS-M10SKV-E | RAS-B10UFV-E | RAS-M10GDV-E | RAS-M10SMUV-E |
| | 13 | RAS-M13PKVP-E (ND) | RAS-M13SKV-E | RAS-B13UFV-E | RAS-M13GDV-E | RAS-M13SMUV-E |
| | 16 | RAS-M16PKVP-E (ND) | RAS-M16SKV-E | - | RAS-M16GDV-E | RAS-M16SMUV-E |
| | 18 | RAS-M18PKVP-E (ND) | - | RAS-B18UFV-E | - | - |
| | 22 | - | RAS-M22SKV-E | - | - | - |
| | 7 | - | RAS-M07SKV-E | - | - | - |
| | 10 | RAS-M10PKVP-E (ND) | RAS-M10SKV-E | RAS-B10UFV-E | RAS-M10GDV-E | RAS-M10SMUV-E |
| | 13 | RAS-M13PKVP-E (ND) | RAS-M13SKV-E | RAS-B13UFV-E | RAS-M13GDV-E | RAS-M13SMUV-E |
| | 16 | RAS-M16PKVP-E (ND) | RAS-M16SKV-E | - | RAS-M16GDV-E | RAS-M16SMUV-E |
| | 18 | RAS-M18PKVP-E (ND) | - | RAS-B18UFV-E | - | - |
| | 22 | - | RAS-M22SKV-E | - | - | - |



Installation flexibility

80m



The multisplit system allow up to 25m for one room installation and 80 meters of total pipe length.

Toshiba new Super efficient DC Twin rotary compressor enables top performance at low energy consumption. With this efficient unit, operating costs decrease dramatically, compare to other multisplit systems.

Toshiba multi-splits are equipped with Toshiba DC hybrid inverter, an enhanced feature that ensures improved performance and reliability.

Wide range of indoor units available: Super Daiseikai, high-wall, ducted, cassette 600x600 and the new Console from Toshiba.

Environmental conscious, with R-410A refrigerant and reduced overall CO₂ emissions.

Superior reliability, due to the reduction of the compressor ON/ OFF cycles.

Low noise levels.

Pipe elevation up to 15 meters in installation height.

MULTI-SPLIT

OUTDOOR UNIT



OUTDOOR UNITS

RAS-M18UAV-E

RAS-3M26UAV-E
RAS-4M27UAV-E
RAS-5M34UAV-E1

| UAV | | Performance data | | | |
|--------------------------------|-------|------------------|---------------|---------------|----------------|
| | | 2-room | 3-room | 4-room | 5-room |
| | | RAS-M18UAV-E | RAS-3M26UAV-E | RAS-4M27UAV-E | RAS-5M34UAV-E1 |
| Outdoor unit | | | | | |
| Cooling capacity | kW | 5,2 | 7,5 | 8,0 | 10,0 |
| Cooling capacity (min. - max.) | kW | 1,4 - 6,2 | 4,1 - 9,0 | 4,2 - 9,3 | 3,7 - 11,0 |
| Power input | kW CO | 1,44 | 2,0 | 2,29 | 2,92 |
| EER | W/W | 3,61 | 3,75 | 3,5 | 3,42 |
| Energy efficiency class | | A | A | A | A |
| Heating capacity | kW/h | 5,6 | 9,0 | 9 | 12 |
| Heating capacity (min. - max.) | kW | 0,9 - 8,3 | 2,0 - 11,2 | 3,0 - 11,7 | 3,4 - 14,0 |
| Power input | kW | 1,19 | 2,20 | 1,93 | 2,83 |
| COP | kW | 4,71 | 4,09 | 4,67 | 4,24 |
| Energy efficiency class | W/W | A | A | A | A |

| UAV | | Physical data outdoor | | | |
|--------------------------------------|----------------------------|-----------------------|-----------------|---------------------|---------------------|
| | | RAS-M18UAV-E | RAS-3M26UAV-E | RAS-4M27UAV-E | RAS-5M34UAV-E1 |
| Outdoor unit | | | | | |
| Air Flow | m ³ /h - l/s CO | 1800-500 | 2507-696 | 2507-696 | 3245-901 |
| Sound pressure level | dB(A) CO | 49 | 48 | 48 | 51 |
| Sound power level | dB(A) CO | 64 | 63 | 63 | 66 |
| Operating range | °C CO | 5-43 | 10-43 | 10-43 | 10-43 |
| Air Flow | m ³ /h - l/s HP | 1950-542 | 2507-696 | 2507-696 | 3562-989 |
| Sound pressure level | dB(A) HP | 51 | 49 | 49 | 54 |
| Sound power level | dB(A) HP | 66 | 64 | 63 | 69 |
| Operating range | °C HP | -15-24 | -15-22 | -15-22 | -10-22 |
| Dimensions (HxWxD) | mm | 550x780x290 | 890x900x320 | 890x900x320 | 890x900x320 |
| Weight | kg | 41 | 69 | 69 | 75 |
| Compressor type | | DC Twin Rotary | DC Twin Rotary | DC Twin Rotary | DC Twin Rotary |
| Flare connections - gas | | 3/8" + 1/2" | 1/2" x 2 + 3/8" | 3/8" x 2 + 1/2" x 2 | 3/8" x 3 + 1/2" x 2 |
| Flare connections - liquid | | 1/4" x 2 | 1/4" x 3 | 1/4" x 4 | 1/4" x 5 |
| Maximum pipe length (per unit/total) | m | 20 / 30 | 25 / 70 | 25 / 70 | 25 / 80 |
| Maximum height difference | m | 10 | 15 | 15 | 15 |
| Chargeless pipe length | m | 20 | 40 | 40 | 40 |
| Power supply | V-ph-Hz | 220/240-1-50 | 220/240-1-50 | 220/240-1-50 | 220/240-1-50 |

CO = cooling mode
HP = heating mode



DC Compressor



Fast and precise temperature management, with energy savings of 40 - 50% compared to fixed-speed systems.

Toshiba multi-splits are equipped with Toshiba DC hybrid inverter, an enhanced feature that ensures improved performance and reliability.

Wide range of indoor units available: Daiseikai, high-wall, ducted, cassette 600x600 and console.

A perfect combination of DC twin rotary compressor, DC hybrid inverter and R-410A refrigerant.

Superior reliability, due to the reduction of the compressor ON/ OFF cycles.

Low noise levels.

Flexibility: this system allows up to 25 m piping length for one room ensuring the overall length is not exceeded.

MULTI-SPLIT

OUTDOOR UNIT



OUTDOOR UNITS

RAS-M14GAV-E

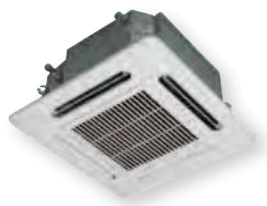
RAS-3M18SAV-E

RAS-4M23SAV-E

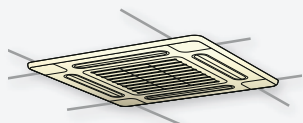
| GAV/SAV | | Performance table | | |
|--------------------------------|-------|-------------------|---------------|---------------|
| | | 2-room | 3-room | 4-room |
| Outdoor unit | | RAS-M14GAV-E | RAS-3M18SAV-E | RAS-4M23SAV-E |
| Cooling capacity | kW | 4,0 | 5,2 | 6,8 |
| Cooling capacity (min. - max.) | kW | 1,1 - 4,5 | 1,4 - 6,5 | 1,4 - 7,5 |
| Power input | kW CO | 1,08 | 1,34 | 1,95 |
| EER | W/W | 3,70 | 3,88 | 3,49 |
| Energy efficiency class | CO | A | A | A |
| Heating capacity | kW | 4,4 | 6,8 | 7,2 |
| Heating capacity (min. - max.) | kW | 0,5 - 5,2 | 0,8 - 7,7 | 1,4 - 8,4 |
| Power input | kW HP | 1,01 | 1,60 | 1,63 |
| COP | W/W | 4,35 | 4,25 | 4,42 |
| Energy efficiency class | HP | A | A | A |

| GAV/SAV | | Physical data outdoor | | |
|--------------------------------------|-------------------------|-----------------------|---------------|---------------|
| | | RAS-M14GAV-E | RAS-3M18SAV-E | RAS-4M23SAV-E |
| Outdoor unit | | RAS-M14GAV-E | RAS-3M18SAV-E | RAS-4M23SAV-E |
| Air Flow | m ³ /h - l/s | 1812 - 503 | 2100 - 583 | 2802 - 778 |
| Sound pressure level | dB(A) CO | 46 | 47 | 47 |
| Sound power level | dB(A) CO | 59 | 62 | 62 |
| Operating range | °C CO | 5=43 | 5=43 | 5=43 |
| Sound pressure level | dB(A) HP | 48 | 49 | 48 |
| Sound power level | dB(A) HP | 61 | 64 | 63 |
| Operating range | °C HP | -15=24 | -15=24 | -15=24 |
| Dimensions (HxWxD) | mm | 550x780x290 | 695x780x270 | 795x900x320 |
| Weight | kg | 36 | 47 | 55 |
| Compressor type | | DC Twin Rotary | Twin Rotary | Twin Rotary |
| Flare connections - gas | | 3/8" x 2 | 3/8" x 3 | 3/8" x 4 |
| Flare connections - liquid | | 1/4" x 2 | 1/4" x 3 | 1/4" x 4 |
| Maximum pipe length (per unit/total) | m | 20/30 | 20/50 | 25/60 |
| Maximum height difference | m | 10 | 10 | 15 |
| Chargeless pipe length | m | 20 | 50 | 40 |
| Power supply | V-ph-Hz | 220/240-1-50 | 220/240-1-50 | 220/240-1-50 |

CO = cooling mode
HP = heating mode



Standard size



Stylish design and compact dimensions to suit all standard 600x600 mm grid ceilings.

This 4-way cassette has been designed to suit all the standard 600x600 mm grid ceiling, for easy installation and maintenance.

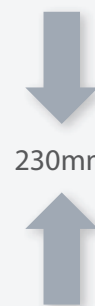
Its compact and stylish panel design makes it discreet and unobtrusive. Both the installation and the maintenance are really easy, thanks to the simple access to electrical box by simply removing the suction grill.

- Complete range from 10 to 16 k.
- Easy maintenance: easy access to electrical box by simply removing the suction grill.
- Easy installation by panel adjust pocket.
- All units equipped with IR remotes as standard.
- Corner pocket opening.

4-WAY CASSETTE
INDOOR UNIT

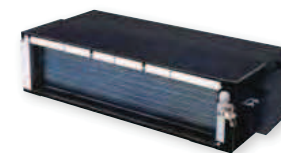
S M U V

Slim design



230mm

Very slim design and only 230 mm high, for easier and versatile installations.



These ducted multi-split inverter units offer reliable and controllable comfort year-round.

The compact and quiet units are suitable for a wide range of residential and light commercial applications, with one outdoor unit serving up to four indoor units.

- Easy-to-use infrared remote control or wired remote control as an option.
- Low noise level: the unit operates very quietly.
- Very slim design and only 230 mm high, for easier and more flexible installation.
- Flexible air inlet: rear or below the unit.
- Drain pump kit available as an option.
- Up to 63,7 Pa static pressure.

DUCTED
INDOOR UNIT

G D V

| SMUV | | Physical data Indoor unit | | | |
|----------------------------------|-------------------------|---------------------------|---------------|---------------|-------------|
| Indoor unit | HP | RAS-M10SMUV-E | RAS-M13SMUV-E | RAS-M16SMUV-E | |
| Air flow (h/l) | m ³ /h - l/s | CO | 588 - 163 | 618 - 172 | 660 - 183 |
| Sound pressure level (h/l) | dB(A) | CO | 37/30 | 38/30 | 40/31 |
| Sound power level | dB(A) | CO | 52 | 53 | 55 |
| Air flow (h/l) | m ³ /h | HP | 558 - 432 | 618 - 432 | 660 - 450 |
| Sound pressure level (h/l) | dB(A) | HP | 37/30 | 38/30 | 40/31 |
| Sound power level | dB(A) | HP | 52 | 53 | 55 |
| Dimensions (HxWxD) | mm | | 268x575x575 | 268x575x575 | 268x575x575 |
| Weight | kg | | 15 | 15 | 15 |
| Flare connections (gas - liquid) | | | 3/8" - 1/4" | 3/8" - 1/4" | 1/2" - 1/4" |

CO = cooling mode HP = heating mode

| GDV | | Physical data Indoor unit | | | |
|---|-------------------------|---------------------------|-------------------|-------------------|-------------------|
| Indoor unit | HP | RAS-M10GDV-E | RAS-M13GDV-E | RAS-M16GDV-E | |
| Air flow (h/l) | m ³ /h - l/s | CO | 720/400 - 200/111 | 780/428 - 217/119 | 780/428 - 217/119 |
| Sound pressure level (h/l) | dB(A) | CO | 31/23 | 32/24 | 33/25 |
| Sound power level (h/l) | dB(A) | CO | 44/36 | 45/37 | 46/38 |
| Air flow (h/l) | m ³ /h - l/s | HP | 720/450 - 200/111 | 780/428 - 217/119 | 780/428 - 217/119 |
| Sound pressure level (h/l) | dB(A) | HP | 32/24 | 33/25 | 34/26 |
| Sound power level (h/l) | dB(A) | HP | 45/37 | 46/38 | 47/34 |
| Dimensions (HxWxD) | mm | | 230 x 750 x 440 | 230 x 750 x 440 | 230 x 750 x 440 |
| Weight | kg | | 19 | 19 | 19 |
| Flare connections (gas - liquid) | | | 3/8" - 1/4" | 3/8" - 1/4" | 1/2" - 1/4" |
| External static pressure* (stand/upper limit) | Pa | | 35,3/54,9 | 41,2/63,7 | 41,2/63,7 |

CO = cooling mode HP = heating mode



Self cleaning function



When the air conditioner is turned off, the internal fan runs and dries the moisture coil, before turning off automatically.

The new SuperDaiseikai has been designed and created with the objective to provide excellence, respecting the latest eco-evolution trends and maintaining the ultimate comfort.

World's best class energy efficiency. Pure air. Premium design.

Fast filtration: impurities are ionized by the ion charger and absorbed by the new heat exchanger.

Washable front panel.

Compact Infra red Remote control with slide cover to hide the less used buttons.



Toshiba IAQ filters



Toshiba IAQ filter filtration system includes extremely powerful anti-virus, anti-bacteria and deodorizing effects.

This elegant unit combines an improved energy efficiency with indoor air quality.

Very silent with a unique "Quiet" button on the remote control, to further increase the acoustic comfort.

One touch my comfort button. Memorize the desired operation parameters.

Self cleaning function to remove moist from the internal components of the unit.

Modern and compact design.

HI-WALL

INDOOR UNIT

P K V P

HI-WALL

INDOOR UNIT

S K V

| PKVP | | Physical data Indoor unit | | | |
|--------------------------------|-------------------------|---------------------------|------------------|-------------------|-------------------|
| Indoor unit | | M110PKVP-E | M133PKVP-E | M166PKVP-E | M188PKVP-E |
| Air Flow (h/l) | m ³ /h - l/s | CO 624/306 - 173/85 | 696/318 - 193/88 | 744/372 - 207/103 | 804/408 - 223/113 |
| Sound power level (h/l) | dB(A) | CO 43/27 | 45/27 | 47/30 | 49/31 |
| Sound power level (h/l) | dB(A) | CO 58/42 | 60/42 | 62/45 | 64/46 |
| Air Flow (h/l) | m ³ /h - l/s | HP 666/348 - 185/97 | 696/348 - 193/97 | 744/384 - 207/107 | 804/420 - 223/117 |
| Sound power level (h/l) | dB(A) | HP 43/27 | 45/27 | 47/30 | 49/31 |
| Sound power level (h/l) | dB(A) | HP 58/42 | 60/42 | 62/45 | 64/46 |
| Dimensions (HxWxD) | mm | 295 x 790 x 242 | 295 x 790 x 242 | 295 x 790 x 242 | 295 x 790 x 242 |
| Weight | kg | 12 | 12 | 12 | 12 |
| Flare connections (gas-liquid) | | 3/8" - 1/4" | 3/8" - 1/4" | 1/2" - 1/4" | 1/2" - 1/4" |

CO = cooling mode HP = heating mode

| SKV | | Physical data indoor | | | | | | |
|--------------------------------|-------------------------|----------------------|-------------|-------------|-------------|--------------|--------------|----------|
| Indoor unit | | RAS- | M07SKV-E | M10SKV-E | M13SKV-E | M16SKV-E | M22SKV-E | M24SKV-E |
| Air Flow | m ³ /h - l/s | CO 516 - 143 | 516 - 143 | 563 - 156 | 684 - 190 | 1080 - 300 | 1134 - 315 | |
| Sound power level (h/l) | dB(A) | CO 38/25 | 38/25 | 39/26 | 45/30 | 47/35 | 49/37 | |
| Sound power level (h/l) | dB(A) | CO 51/38 | 51/38 | 52/39 | 58/43 | 60/48 | 62/50 | |
| Air Flow | m ³ /h - l/s | HP 570 - 158 | 570 - 158 | 630 - 175 | 743 - 206 | 1098 - 305 | 1152 - 320 | |
| Sound power level (h/l) | dB(A) | HP 38/27 | 39/27 | 40/28 | 45/31 | 47/35 | 49/37 | |
| Sound power level (h/l) | dB(A) | HP 51/40 | 52/40 | 53/41 | 58/44 | 60/48 | 62/50 | |
| Dimensions (HxWxD) | mm | 275x790x205 | 275x790x205 | 275x790x205 | 275x790x205 | 320x1050x228 | 320x1050x228 | |
| Weight | kg | 9 | 9 | 9 | 9 | 13 | 13 | |
| Flare connections (gas-liquid) | | 3/8" - 1/4" | 3/8" - 1/4" | 3/8" - 1/4" | 1/2" - 1/4" | 1/2" - 1/4" | 1/2" - 1/4" | |

CO = cooling mode HP = heating mode



Floor heating function



Unique floor heating function, to deliver a powerful flow at floor level for a uniform and comfortable room heating.

Innovative and compact unit to be installed on the floor and in low wall applications, fit perfectly under the window sills or in a low ceiling attic.

Compact and modern design in all three dimensions (60x70x22 cm).

Bi-flow. Two outlets for complete personalized flow: flow intensity and air direction control.

Toshiba IAQ filter filtration system, includes extremely powerful anti virus, anti bacteria and the deodorizing effects.

Child lock function on the unit display panel.

Brightness level control of the display unit to reduce the led light glow.

Automatic restart function in case of unexpected electricity supply line power cuts.

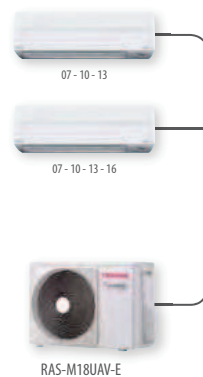
CONSOLE

INDOOR UNIT

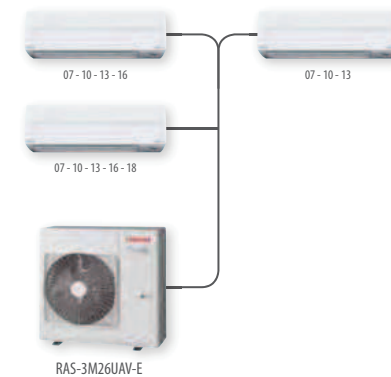
U F V

Indoor units combinations examples

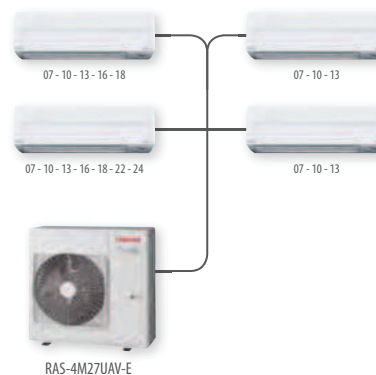
2:1



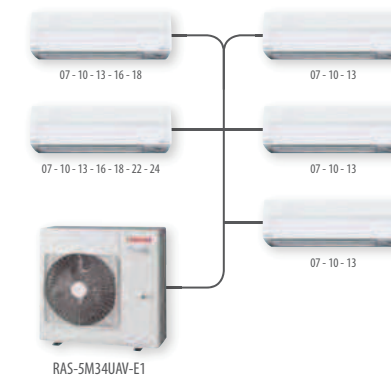
3:1



4:1



5:1



UFV

Physical data Indoor unit

| Indoor unit | HP | | RAS-B10UFV-E | RAS-B13UFV-E | RAS-B18UFV-E |
|--------------------------------|-------------------------|----|--------------|--------------|--------------|
| Air Flow | m ³ /h - l/s | CO | 468 - 130 | 510 - 142 | 600 - 167 |
| Sound pressure level (h/l) | dB(A) | CO | 39/26 | 40/27 | 46/34 |
| Sound power level (h/l) | dB(A) | CO | 54 | 55 | 61 |
| Air Flow | m ³ /h - l/s | HP | 510 - 142 | 552 - 153 | 642 - 178 |
| Sound pressure level (h/l) | dB(A) | HP | 39/26 | 40/27 | 46/34 |
| Sound power level (h/l) | dB(A) | HP | 54 | 55 | 61 |
| Dimensions (HxWxD) | mm | | 600x700x220 | 600x700x220 | 600x700x220 |
| Weight | kg | | 16 | 16 | 16 |
| Flare connections (gas-liquid) | | | 3/8" - 1/4" | 3/8" - 1/4" | 1/2" - 1/4" |

CO = cooling mode HP = heating mode

Note: Different type of indoor units can be connected in the same system. Refer to the matching table to see the sizes available for each system combination.

Outdoor unit RAS-M14GAV-E Combination ratings (size 14) heat pump

Performances in Cooling mode

| Operating status | Combination | | Unit capacity (kW) | | | Cooling capacity (kW) | | | Power input (W) | | | Operating current (A) | | | EER | label |
|------------------|-------------|--------|--------------------|--------|------|-----------------------|------|------|-----------------|------|------|-----------------------|------|------|-----|-------|
| | Unit A | Unit B | Unit A | Unit B | Min. | Rated | Max. | Min. | Rated | Max. | Min. | Rated | Max. | | | |
| 2 unit operation | 10 | 10 | 1,95 | 1,95 | 1,4 | 3,9 | 4,4 | 230 | 1070 | 1290 | 1,43 | 4,9 | 5,84 | 3,64 | A | |
| | 13 | 10 | 2,33 | 1,67 | 1,4 | 4 | 4,5 | 230 | 1080 | 1300 | 1,43 | 4,94 | 5,89 | 3,70 | A | |

Performances in Heating mode

| Operating status | Combination | | Unit capacity (kW) | | | Heating capacity (kW) | | | Power input (W) | | | Operating current (A) | | | EER | label |
|------------------|-------------|--------|--------------------|--------|------|-----------------------|------|------|-----------------|------|------|-----------------------|------|------|-----|-------|
| | Unit A | Unit B | Unit A | Unit B | Min. | Rated | Max. | Min. | Rated | Max. | Min. | Rated | Max. | | | |
| 2 unit operation | 10 | 10 | 2,15 | 2,15 | 0,9 | 4,3 | 5,1 | 170 | 980 | 1230 | 1,06 | 4,39 | 5,51 | 4,39 | A | |
| | 13 | 10 | 2,5 | 1,9 | 0,9 | 4,4 | 5,2 | 170 | 1010 | 1250 | 1,06 | 4,53 | 5,6 | 4,36 | A | |

Outdoor unit RAS-M18UAV-E Combination ratings (size 18) heat pump

Performances in Cooling mode

| Operating status | Combination | | Unit capacity (kW) | | | Cooling capacity (kW) | | | Power input (W) | | | Operating current (A) | | | EER | label |
|------------------|-------------|--------|--------------------|--------|------|-----------------------|------|------|-----------------|------|------|-----------------------|------|------|-----|-------|
| | Unit A | Unit B | Unit A | Unit B | Min. | Rated | Max. | Min. | Rated | Max. | Min. | Rated | Max. | | | |
| 2 unit operation | 07 | 07 | 2,00 | 2,00 | 1,4 | 4,0 | 4,8 | 260 | 960 | 2150 | 1,61 | 4,50 | 9,54 | 4,17 | A | |
| | 10 | 07 | 2,65 | 1,95 | 1,4 | 4,6 | 6,0 | 260 | 1200 | 2150 | 1,61 | 5,61 | 9,54 | 3,83 | A | |
| | 10 | 10 | 2,55 | 2,55 | 1,4 | 5,1 | 6,1 | 260 | 1410 | 2150 | 1,61 | 6,45 | 9,54 | 3,62 | A | |
| | 13 | 07 | 3,38 | 1,82 | 1,4 | 5,2 | 6,1 | 260 | 1440 | 2170 | 1,61 | 6,45 | 9,63 | 3,61 | A | |
| | 13 | 10 | 3,00 | 2,20 | 1,4 | 5,2 | 6,2 | 260 | 1440 | 2170 | 1,61 | 6,45 | 9,63 | 3,61 | A | |
| | 16 | 07 | 3,60 | 1,60 | 1,4 | 5,2 | 6,2 | 260 | 1440 | 2170 | 1,61 | 6,45 | 9,63 | 3,61 | A | |
| | 16 | 10 | 3,25 | 1,95 | 1,4 | 5,2 | 6,2 | 260 | 1440 | 2170 | 1,61 | 6,45 | 9,63 | 3,61 | A | |
| | 13 | 13 | 2,60 | 2,60 | 1,4 | 5,2 | 6,2 | 260 | 1440 | 2170 | 1,61 | 6,45 | 9,63 | 3,61 | A | |
| | 16 | 16 | 2,85 | 2,35 | 1,4 | 5,2 | 6,2 | 260 | 1440 | 2170 | 1,61 | 6,45 | 9,63 | 3,61 | A | |

Performances in Heating mode

| Operating status | Combination | | Unit capacity (kW) | | | Heating capacity (kW) | | | Power input (W) | | | Operating current (A) | | | EER | label |
|------------------|-------------|--------|--------------------|--------|------|-----------------------|------|------|-----------------|------|------|-----------------------|-------|------|-----|-------|
| | Unit A | Unit B | Unit A | Unit B | Min. | Rated | Max. | Min. | Rated | Max. | Min. | Rated | Max. | | | |
| 2 unit operation | 07 | 07 | 2,70 | 2,70 | 0,9 | 5,4 | 8,0 | 200 | 1190 | 2480 | 1,24 | 5,35 | 11,12 | 4,54 | A | |
| | 10 | 07 | 3,79 | 1,61 | 0,9 | 5,4 | 8,2 | 200 | 1190 | 2530 | 1,24 | 5,35 | 11,22 | 4,54 | A | |
| | 10 | 10 | 2,70 | 2,70 | 0,9 | 5,4 | 8,2 | 200 | 1190 | 2530 | 1,24 | 5,35 | 11,22 | 4,54 | A | |
| | 13 | 07 | 3,64 | 1,96 | 0,9 | 5,6 | 8,2 | 200 | 1190 | 2530 | 1,24 | 5,35 | 11,22 | 4,71 | A | |
| | 13 | 10 | 3,11 | 2,49 | 0,9 | 5,6 | 8,3 | 200 | 1190 | 2530 | 1,24 | 5,35 | 11,22 | 4,71 | A | |
| | 16 | 07 | 3,76 | 1,84 | 0,9 | 5,6 | 8,3 | 200 | 1190 | 2530 | 1,24 | 5,35 | 11,22 | 4,71 | A | |
| | 16 | 10 | 3,24 | 2,36 | 0,9 | 5,6 | 8,3 | 200 | 1190 | 2530 | 1,24 | 5,35 | 11,22 | 4,71 | A | |
| | 13 | 13 | 2,80 | 2,80 | 0,9 | 5,6 | 8,3 | 200 | 1190 | 2530 | 1,24 | 5,35 | 11,22 | 4,71 | A | |
| | 16 | 16 | 2,93 | 2,67 | 0,9 | 5,6 | 8,3 | 200 | 1190 | 2530 | 1,24 | 5,35 | 11,22 | 4,71 | A | |

Outdoor unit RAS-3M18SAV-E Combination ratings (size 18) heat pump

Performances in Cooling mode

| Operating status | Combination | | | Unit capacity (kW) | | | Cooling capacity (kW) | | | Power input (W) | | | Operating current (A) | | | EER | label |
|------------------|-------------|--------|--------|--------------------|--------|--------|-----------------------|-------|------|-----------------|-------|------|-----------------------|-------|------|------|-------|
| | Unit A | Unit B | Unit C | Unit A | Unit B | Unit C | Min. | Rated | Max. | Min. | Rated | Max. | Min. | Rated | Max. | | |
| 3 unit operation | 10 | 10 | 10 | 1,7 | 1,7 | 1,7 | 2,2 | 5,1 | 6,3 | 420 | 1340 | 1970 | 2,4 | 6,07 | 8,74 | 3,81 | A |
| | 13 | 10 | 10 | 2,14 | 1,53 | 1,53 | 2,2 | 5,2 | 6,5 | 420 | 1340 | 2100 | 2,4 | 6,07 | 9,32 | 3,88 | A |
| | 16 | 10 | 10 | 2,46 | 1,37 | 1,37 | 2,2 | 5,2 | 6,5 | 420 | 1340 | 2100 | 2,4 | 6,07 | 9,32 | 3,88 | A |
| 3 unit operation | 13 | 13 | 10 | 1,92 | 1,92 | 1,37 | 2,2 | 5,2 | 6,5 | 420 | 1340 | 2100 | 2,4 | 6,07 | 9,32 | 3,88 | A |

Performances in Heating mode

| Operating status | Combination | | | Unit capacity (kW) | | | Heating capacity (kW) | | | Power input (W) | | | Operating current (A) | | | EER | label |
|------------------|-------------|--------|--------|--------------------|--------|--------|-----------------------|-------|------|-----------------|-------|------|-----------------------|-------|------|------|-------|
| | Unit A | Unit B | Unit C | Unit A | Unit B | Unit C | Min. | Rated | Max. | Min. | Rated | Max. | Min. | Rated | Max. | | |
| 3 unit operation | 10 | 10 | 10 | 2,23 | 2,23 | 2,23 | 2,2 | 6,7 | 7,5 | 420 | 1580 | 1950 | 2,4 | 7,16 | 8,74 | 4,24 | A |
| | 13 | 10 | 10 | 2,63 | 2,08 | 2,08 | 2,2 | 6,8 | 7,7 | 420 | 1600 | 2030 | 2,4 | 7,25 | 9,01 | 4,25 | A |
| | 16 | 10 | 10 | 2,95 | 1,93 | 1,93 | 2,2 | 6,8 | 7,7 | 420 | 1600 | 2030 | 2,4 | 7,25 | 9,01 | 4,25 | A |
| | 13 | 13 | 10 | 2,44 | 2,44 | 1,93 | 2,2 | 6,8 | 7,7 | 420 | 1600 | 2030 | 2,4 | 7,25 | 9,01 | 4,25 | A |

Outdoor unit RAS-4M23SAV-E Combination ratings (size 23) heat pump

Performances in Cooling mode

| Operating status | Combination | | | | Unit capacity (kW) | | | | Cooling capacity (kW) | | | Power input (W) | | | Operating current (A) | | | EER | label |
|------------------|-------------|--------|--------|--------|--------------------|--------|--------|--------|-----------------------|-------|------|-----------------|-------|------|-----------------------|-------|------|------|-------|
| | Unit A | Unit B | Unit C | Unit D | Unit A | Unit B | Unit C | Unit D | Min. | Rated | Max. | Min. | Rated | Max. | Min. | Rated | Max. | | |
| 4 unit operation | 10 | 10 | 10 | 10 | 1,7 | 1,7 | 1,7 | 1,7 | 3 | 6,8 | 7,5 | 500 | 1950 | 2300 | 2,9 | 8,74 | 10,2 | 3,49 | A |
| | 13 | 10 | 10 | 10 | 2,16 | 1,55 | 1,55 | 1,55 | 3 | 6,8 | 7,5 | 500 | 1950 | 2300 | 2,9 | 8,74 | 10,2 | 3,49 | A |
| | 16 | 10 | 10 | 10 | 2,55 | 1,42 | 1,42 | 1,42 | 3 | 6,8 | 7,5 | 500 | 1950 | 2300 | 2,9 | 8,74 | 10,2 | 3,49 | A |
| | 13 | 13 | 10 | 10 | 1,98 | 1,98 | 1,42 | 1,42 | 3 | 6,8 | 7,5 | 500 | 1950 | 2300 | 2,9 | 8,74 | 10,2 | 3,49 | A |

Performances in Heating mode

| Operating status | Combination | | | | Unit capacity (kW) | | | | Heating capacity (kW) | | | Power input (W) | | | Operating current (A) | | | EER | label |
|------------------|-------------|--------|--------|--------|--------------------|--------|--------|--------|-----------------------|-------|------|-----------------|-------|------|-----------------------|-------|------|------|-------|
| | Unit A | Unit B | Unit C | Unit D | Unit A | Unit B | Unit C | Unit D | Min. | Rated | Max. | Min. | Rated | Max. | Min. | Rated | Max. | | |
| 4 unit operation | 10 | 10 | 10 | 10 | 1,8 | 1,8 | 1,8 | 1,8 | 2 | 7,2 | 8,4 | 500 | 1630 | 2110 | 2,90 | 7,31 | 9,36 | 4,42 | A |
| | 13 | 10 | 10 | 10 | 2,23 | 1,66 | 1,66 | 1,66 | 2 | 7,2 | 8,4 | 500 | 1630 | 2110 | 2,90 | 7,31 | 9,36 | 4,42 | A |
| | 16 | 10 | 10 | 10 | 2,53 | 1,56 | 1,56 | 1,56 | 2 | 7,2 | 8,4 | 500 | 1630 | 2110 | 2,90 | 7,31 | 9,36 | 4,42 | A |
| | 13 | 13 | 10 | 10 | 2,06 | 2,06 | 1,54 | 1,54 | 2 | 7,2 | 8,4 | 500 | 1630 | 2110 | 2,90 | 7,31 | 9,36 | 4,42 | A |

Outdoor unit **RAS-3M26UAV-E** Combination ratings (size 26) heat pump

Performances in Cooling mode

| Operating status | Combination | | | Unit capacity (kW) | | | Cooling capacity (kW) | | | Power input (W) | | | Operating current (A) | | | EER | label |
|------------------|-------------|--------|--------|--------------------|--------|--------|-----------------------|-------|------|-----------------|-------|------|-----------------------|-------|-------|------|-------|
| | Unit A | Unit B | Unit C | Unit A | Unit B | Unit C | Min. | Rated | Max. | Min. | Rated | Max. | Min. | Rated | Max. | | |
| | 07 | 07 | 07 | 2,00 | 2,00 | 2,00 | 3,8 | 6,0 | 8,4 | 950 | 1400 | 2720 | 4,59 | 6,41 | 12,07 | 4,29 | A |
| | 10 | 07 | 07 | 2,70 | 2,00 | 2,00 | 3,8 | 6,7 | 8,4 | 950 | 1660 | 2720 | 4,59 | 7,60 | 12,07 | 4,04 | A |
| | 13 | 07 | 07 | 3,60 | 1,95 | 1,95 | 3,9 | 7,5 | 8,6 | 960 | 2000 | 2750 | 4,64 | 9,15 | 12,20 | 3,75 | A |
| | 16 | 07 | 07 | 3,97 | 1,76 | 1,76 | 3,9 | 7,5 | 8,6 | 960 | 2000 | 2750 | 4,64 | 9,15 | 12,20 | 3,75 | A |
| | 18 | 07 | 07 | 4,17 | 1,67 | 1,67 | 4,0 | 7,5 | 8,8 | 970 | 2000 | 2770 | 4,69 | 9,15 | 12,29 | 3,75 | A |
| | 22 | 07 | 07 | 4,50 | 1,50 | 1,50 | 4,0 | 7,5 | 8,8 | 970 | 2000 | 2770 | 4,69 | 9,15 | 12,29 | 3,75 | A |
| | 24 | 07 | 07 | 4,80 | 1,35 | 1,35 | 4,0 | 7,5 | 8,8 | 970 | 2000 | 2770 | 4,69 | 9,15 | 12,29 | 3,75 | A |
| | 10 | 10 | 07 | 2,70 | 2,70 | 2,00 | 3,8 | 7,4 | 8,4 | 950 | 1850 | 2720 | 4,59 | 8,47 | 12,07 | 4,00 | A |
| | 13 | 10 | 07 | 3,30 | 2,41 | 1,79 | 3,9 | 7,5 | 8,6 | 960 | 2000 | 2750 | 4,64 | 9,15 | 12,20 | 3,75 | A |
| | 16 | 10 | 07 | 3,67 | 2,20 | 1,63 | 4,0 | 7,5 | 8,8 | 970 | 2000 | 2770 | 4,69 | 9,15 | 12,29 | 3,75 | A |
| | 18 | 10 | 07 | 3,87 | 2,09 | 1,55 | 4,0 | 7,5 | 8,8 | 970 | 2000 | 2770 | 4,69 | 9,15 | 12,29 | 3,75 | A |
| | 22 | 10 | 07 | 4,21 | 1,89 | 1,40 | 4,0 | 7,5 | 8,8 | 970 | 2000 | 2770 | 4,69 | 9,15 | 12,29 | 3,75 | A |
| | 24 | 10 | 07 | 4,51 | 1,72 | 1,27 | 4,0 | 7,5 | 8,8 | 970 | 2000 | 2770 | 4,69 | 9,15 | 12,29 | 3,75 | A |
| | 13 | 13 | 07 | 2,95 | 2,95 | 1,60 | 4,0 | 7,5 | 8,8 | 970 | 2000 | 2770 | 4,69 | 9,15 | 12,29 | 3,75 | A |
| | 16 | 13 | 07 | 3,31 | 2,72 | 1,47 | 4,0 | 7,5 | 8,8 | 970 | 2000 | 2770 | 4,69 | 9,15 | 12,29 | 3,75 | A |
| | 18 | 13 | 07 | 3,50 | 2,59 | 1,40 | 4,0 | 7,5 | 8,8 | 970 | 2000 | 2770 | 4,69 | 9,15 | 12,29 | 3,75 | A |
| | 22 | 13 | 07 | 3,85 | 2,37 | 1,28 | 4,0 | 7,5 | 8,8 | 970 | 2000 | 2770 | 4,69 | 9,15 | 12,29 | 3,75 | A |
| | 24 | 13 | 07 | 4,16 | 2,17 | 1,17 | 4,0 | 7,5 | 8,8 | 970 | 2000 | 2770 | 4,69 | 9,15 | 12,29 | 3,75 | A |
| | 16 | 16 | 07 | 3,07 | 3,07 | 1,36 | 4,0 | 7,5 | 8,8 | 970 | 2000 | 2770 | 4,69 | 9,15 | 12,29 | 3,75 | A |
| | 18 | 16 | 07 | 3,26 | 2,93 | 1,30 | 4,0 | 7,5 | 8,8 | 970 | 2000 | 2770 | 4,69 | 9,15 | 12,29 | 3,75 | A |
| | 22 | 16 | 07 | 3,60 | 2,70 | 1,20 | 4,1 | 7,5 | 9,0 | 980 | 2000 | 2800 | 4,73 | 9,15 | 12,42 | 3,75 | A |
| | 24 | 16 | 07 | 3,92 | 2,48 | 1,10 | 4,1 | 7,5 | 9,0 | 980 | 2000 | 2800 | 4,73 | 9,15 | 12,42 | 3,75 | A |
| | 10 | 10 | 10 | 2,50 | 2,50 | 2,50 | 3,9 | 7,5 | 8,6 | 960 | 2000 | 2750 | 4,64 | 9,15 | 12,20 | 3,75 | A |
| | 13 | 10 | 10 | 3,05 | 2,23 | 2,23 | 4,0 | 7,5 | 8,8 | 970 | 2000 | 2770 | 4,69 | 9,15 | 12,29 | 3,75 | A |
| | 16 | 10 | 10 | 3,41 | 2,05 | 2,05 | 4,0 | 7,5 | 8,8 | 970 | 2000 | 2770 | 4,69 | 9,15 | 12,29 | 3,75 | A |
| | 18 | 10 | 10 | 3,61 | 1,95 | 1,95 | 4,0 | 7,5 | 8,8 | 970 | 2000 | 2770 | 4,69 | 9,15 | 12,29 | 3,75 | A |
| | 22 | 10 | 10 | 3,95 | 1,78 | 1,78 | 4,0 | 7,5 | 8,8 | 970 | 2000 | 2770 | 4,69 | 9,15 | 12,29 | 3,75 | A |
| | 24 | 10 | 10 | 4,26 | 1,62 | 1,62 | 4,0 | 7,5 | 8,8 | 970 | 2000 | 2770 | 4,69 | 9,15 | 12,29 | 3,75 | A |
| | 13 | 13 | 10 | 2,75 | 2,75 | 2,00 | 4,0 | 7,5 | 8,8 | 970 | 2000 | 2770 | 4,69 | 9,15 | 12,29 | 3,75 | A |
| | 16 | 13 | 10 | 3,10 | 2,55 | 1,86 | 4,0 | 7,5 | 8,8 | 970 | 2000 | 2770 | 4,69 | 9,15 | 12,29 | 3,75 | A |
| | 18 | 13 | 10 | 3,29 | 2,43 | 1,78 | 4,0 | 7,5 | 8,8 | 970 | 2000 | 2770 | 4,69 | 9,15 | 12,29 | 3,75 | A |
| | 22 | 13 | 10 | 3,63 | 2,24 | 1,63 | 4,1 | 7,5 | 9,0 | 980 | 2000 | 2800 | 4,73 | 9,15 | 12,42 | 3,75 | A |
| | 24 | 13 | 10 | 3,94 | 2,06 | 1,50 | 4,1 | 7,5 | 9,0 | 980 | 2000 | 2800 | 4,73 | 9,15 | 12,42 | 3,75 | A |
| | 16 | 16 | 10 | 2,88 | 2,88 | 1,73 | 4,0 | 7,5 | 8,8 | 970 | 2000 | 2770 | 4,69 | 9,15 | 12,29 | 3,75 | A |
| | 18 | 16 | 10 | 3,07 | 2,77 | 1,66 | 4,0 | 7,5 | 8,8 | 970 | 2000 | 2770 | 4,69 | 9,15 | 12,29 | 3,75 | A |
| | 22 | 16 | 10 | 3,41 | 2,56 | 1,53 | 4,1 | 7,5 | 9,0 | 980 | 2000 | 2800 | 4,73 | 9,15 | 12,42 | 3,75 | A |
| | 24 | 16 | 10 | 3,72 | 2,36 | 1,42 | 4,1 | 7,5 | 9,0 | 980 | 2000 | 2800 | 4,73 | 9,15 | 12,42 | 3,75 | A |
| | 13 | 13 | 13 | 2,50 | 2,50 | 2,50 | 4,0 | 7,5 | 8,8 | 970 | 2000 | 2770 | 4,69 | 9,15 | 12,29 | 3,75 | A |
| | 16 | 13 | 13 | 2,84 | 2,33 | 2,33 | 4,0 | 7,5 | 8,8 | 970 | 2000 | 2770 | 4,69 | 9,15 | 12,29 | 3,75 | A |
| | 18 | 13 | 13 | 3,02 | 2,24 | 2,24 | 4,0 | 7,5 | 8,8 | 970 | 2000 | 2770 | 4,69 | 9,15 | 12,29 | 3,75 | A |
| | 22 | 13 | 13 | 3,36 | 2,07 | 2,07 | 4,1 | 7,5 | 9,0 | 980 | 2000 | 2800 | 4,73 | 9,15 | 12,42 | 3,75 | A |
| | 24 | 13 | 13 | 3,67 | 1,91 | 1,91 | 4,1 | 7,5 | 9,0 | 980 | 2000 | 2800 | 4,73 | 9,15 | 12,42 | 3,75 | A |
| | 16 | 16 | 13 | 2,66 | 2,66 | 2,19 | 4,1 | 7,5 | 9,0 | 980 | 2000 | 2800 | 4,73 | 9,15 | 12,42 | 3,75 | A |
| | 18 | 16 | 13 | 2,84 | 2,56 | 2,10 | 4,1 | 7,5 | 9,0 | 980 | 2000 | 2800 | 4,73 | 9,15 | 12,42 | 3,75 | A |
| | 22 | 16 | 13 | 3,17 | 2,38 | 1,95 | 4,1 | 7,5 | 9,0 | 980 | 2000 | 2800 | 4,73 | 9,15 | 12,42 | 3,75 | A |
| | 24 | 16 | 13 | 3,48 | 2,21 | 1,81 | 4,1 | 7,5 | 9,0 | 980 | 2000 | 2800 | 4,73 | 9,15 | 12,42 | 3,75 | A |
| | 16 | 16 | 16 | 2,50 | 2,50 | 2,50 | 4,1 | 7,5 | 9,0 | 980 | 2000 | 2800 | 4,73 | 9,15 | 12,42 | 3,75 | A |
| | 18 | 16 | 16 | 2,68 | 2,41 | 2,41 | 4,1 | 7,5 | 9,0 | 980 | 2000 | 2800 | 4,73 | 9,15 | 12,42 | 3,75 | A |
| | 22 | 16 | 16 | 3,00 | 2,25 | 2,25 | 4,1 | 7,5 | 9,0 | 980 | 2000 | 2800 | 4,73 | 9,15 | 12,42 | 3,75 | A |

3 unit operation

Outdoor unit **RAS-3M26UAV-E** Combination ratings (size 26) heat pump

Performances in Heating mode

| Operating status | Combination | | | Unit capacity (kW) | | | Cooling capacity (kW) | | | Power input (W) | | | Operating current (A) | | | COP | label |
|------------------|-------------|--------|--------|--------------------|--------|--------|-----------------------|-------|------|-----------------|-------|------|-----------------------|-------|-------|------|-------|
| | Unit A | Unit B | Unit C | Unit A | Unit B | Unit C | Min. | Rated | Max. | Min. | Rated | Max. | Min. | Rated | Max. | | |
| | 07 | 07 | 07 | 2,70 | 2,70 | 2,70 | 2,0 | 8,1 | 10,8 | 380 | 1800 | 2750 | Min. | Rated | Max. | 4,50 | A |
| | 10 | 07 | 07 | 3,53 | 2,38 | 2,38 | 2,0 | 8,3 | 10,8 | 380 | 1900 | 2750 | 2,07 | 8,24 | 12,20 | 4,37 | A |
| | 13 | 07 | 07 | 4,33 | 2,34 | 2,34 | 2,0 | 9,0 | 10,8 | 380 | 2200 | 2750 | 2,07 | 8,70 | 12,20 | 4,09 | A |
| | 16 | 07 | 07 | 4,54 | 2,23 | 2,23 | 2,0 | 9,0 | 10,8 | 380 | 2200 | 2750 | 2,07 | 10,07 | 12,20 | 4,09 | A |
| | 18 | 07 | 07 | 4,74 | 2,13 | 2,13 | 2,0 | 9,0 | 11,0 | 380 | 2200 | 2830 | 2,07 | 10,07 | 12,20 | 4,09 | A |
| | 22 | 07 | 07 | 5,08 | 1,96 | 1,96 | 2,0 | 9,0 | 11,0 | 380 | 2200 | 2830 | 2,07 | 10,07 | 12,20 | 4,09 | A |
| | 24 | 07 | 07 | 5,40 | 1,80 | 1,80 | 2,0 | 9,0 | 11,0 | 380 | 2200 | 2830 | 2,07 | 10,07 | 12,56 | 4,09 | A |
| | 10 | 10 | 07 | 3,18 | 3,18 | 2,14 | 2,0 | 8,5 | 10,8 | 380 | 2000 | 2750 | 2,07 | 10,07 | 12,56 | 4,25 | A |
| | 13 | 10 | 07 | 3,85 | 3,08 | 2,08 | 2,0 | 9,0 | 10,8 | 380 | 2200 | 2750 | 2,07 | 9,15 | 12,20 | 4,09 | A |
| | 16 | 10 | 07 | 4,06 | 2,95 | 1,99 | 2,0 | 9,0 | 11,0 | 380 | 2200 | 2830 | 2,07 | 10,07 | 12,20 | 4,09 | A |
| | 18 | 10 | 07 | 4,25 | 2,83 | 1,91 | 2,0 | 9,0 | 11,0 | 380 | 2200 | 2830 | 2,07 | 10,07 | 12,56 | 4,09 | A |
| | 22 | 10 | 07 | 4,60 | 2,63 | 1,77 | 2,0 | 9,0 | 11,0 | 380 | 2200 | 2830 | 2,07 | 10,07 | 12,56 | 4,09 | A |
| | 24 | 10 | 07 | 4,93 | 2,43 | 1,64 | 2,0 | 9,0 | 11,0 | 380 | 2200 | 2830 | 2,07 | 10,07 | 12,56 | 4,09 | A |
| | 13 | 13 | 07 | 3,54 | 3,54 | 1,91 | 2,0 | 9,0 | 11,0 | 380 | 2200 | 2830 | 2,07 | 10,07 | 12,56 | 4,09 | A |
| | 16 | 13 | 07 | 3,75 | 3,41 | 1,84 | 2,0 | 9,0 | 11,0 | 380 | 2200 | 2830 | 2,07 | 10,07 | 12,56 | 4,09 | A |
| | 18 | 13 | 07 | 3,94 | 3,28 | 1,77 | 2,0 | 9,0 | 11,0 | 380 | 2200 | 2830 | 2,07 | 10,07 | 12,56 | 4,09 | A |
| | 22 | 13 | 07 | 4,29 | 3,06 | 1,65 | 2,0 | 9,0 | 11,0 | 380 | 2200 | 2830 | 2,07 | 10,07 | 12,56 | 4,09 | A |
| | 24 | 13 | 07 | 4,61 | 2,85 | 1,54 | 2,0 | 9,0 | 11,0 | 380 | 2200 | 2830 | 2,07 | 10,07 | 12,56 | 4,09 | A |
| | 16 | 16 | 07 | 3,61 | 3,61 | 1,77 | 2,0 | 9,0 | 11,0 | 380 | 2200 | 2830 | 2,07 | 10,07 | 12,56 | 4,09 | A |
| | 18 | 16 | 07 | 3,80 | 3,49 | 1,71 | 2,0 | 9,0 | 11,0 | 380 | 2200 | 2830 | 2,07 | 10,07 | 12,56 | 4,09 | A |
| | 22 | 16 | 07 | 4,14 | 3,26 | 1,60 | 2,0 | 9,0 | 11,2 | 380 | 2200 | 2900 | 2,07 | 10,07 | 12,56 | 4,09 | A |
| | 24 | 16 | 07 | 4,47 | 3,04 | 1,49 | 2,0 | 9,0 | 11,2 | 380 | 2200 | 2900 | 2,07 | 10,07 | 12,87 | 4,09 | A |
| | 10 | 10 | 10 | 3,00 | 3,00 | 3,00 | 2,0 | 9,0 | 10,8 | 380 | 2200 | 2750 | 2,07 | 10,07 | 12,87 | 4,09 | A |
| | 13 | 10 | 10 | 3,46 | 2,77 | 2,77 | 2,0 | 9,0 | 11,0 | 380 | 2200 | 2830 | 2,07 | 10,07 | 12,20 | 4,09 | A |
| | 16 | 10 | 10 | 3,67 | 2,67 | 2,67 | 2,0 | 9,0 | 11,0 | 380 | 2200 | 2830 | 2,07 | 10,07 | 12,56 | 4,09 | A |
| | 18 | 10 | 10 | 3,86 | 2,57 | 2,57 | 2,0 | 9,0 | 11,0 | 380 | 2200 | 2830 | 2,07 | 10,07 | 12,56 | 4,09 | A |
| | 22 | 10 | 10 | 4,20 | 2,40 | 2,40 | 2,0 | 9,0 | 11,0 | 380 | 2200 | 2830 | 2,07 | 10,07 | 12,56 | 4,09 | A |
| | 24 | 10 | 10 | 4,53 | 2,24 | 2,24 | 2,0 | 9,0 | 11,0 | 380 | 2200 | 2830 | 2,07 | 10,07 | 12 | | |

Outdoor unit **RAS-4M27UAV-E** **Combination ratings (size 27) heat pump**

Performances in Cooling mode

| Operating status | Combination | | | Unit capacity (kW) | | | | Cooling capacity (kW) | | | Power input (W) | | Operating current (A) | | | EER | label | | |
|------------------|-------------|--------|--------|--------------------|--------|--------|--------|-----------------------|------|-------|-----------------|------|-----------------------|------|-------|-------|-------|-------|-------|
| | Unit A | Unit B | Unit C | Unit D | Unit A | Unit B | Unit C | Unit D | Min. | Rated | Max. | Min. | Rated | Max. | Min. | | | Rated | Max. |
| | 07 | 07 | 07 | 07 | 1.8 | 1.78 | 1.78 | 1.78 | 4.0 | 7.1 | 8.6 | 850 | 2029 | 2620 | 4.11 | | | 9.29 | 11.62 |
| 10 | 07 | 07 | 07 | 2.3 | 1.72 | 1.72 | 1.72 | 4.0 | 7.5 | 8.7 | 890 | 2143 | 2640 | 4.30 | 9.81 | 11.71 | 3.50 | A | |
| 13 | 07 | 07 | 07 | 2.9 | 1.57 | 1.57 | 1.57 | 4.1 | 7.6 | 8.9 | 900 | 2171 | 2700 | 4.35 | 9.94 | 11.98 | 3.50 | A | |
| 16 | 07 | 07 | 07 | 3.3 | 1.47 | 1.47 | 1.47 | 4.1 | 7.7 | 9.0 | 930 | 2200 | 2730 | 4.49 | 10.07 | 12.11 | 3.50 | A | |
| 18 | 07 | 07 | 07 | 3.5 | 1.42 | 1.42 | 1.42 | 4.1 | 7.8 | 9.1 | 930 | 2229 | 2760 | 4.49 | 10.20 | 12.24 | 3.50 | A | |
| 22 | *07 | *07 | *07 | 4.0 | 1.33 | 1.33 | 1.33 | 4.2 | 8.0 | 9.3 | 950 | 2286 | 2820 | 4.59 | 10.46 | 12.51 | 3.50 | A | |
| 24 | *07 | *07 | *07 | 4.3 | 1.22 | 1.22 | 1.22 | 4.2 | 8.0 | 9.3 | 950 | 2286 | 2820 | 4.59 | 10.46 | 12.51 | 3.50 | A | |
| 10 | 10 | 07 | 07 | 2.2 | 2.18 | 1.62 | 1.62 | 4.1 | 7.6 | 8.9 | 900 | 2171 | 2700 | 4.35 | 9.94 | 11.98 | 3.50 | A | |
| 13 | 10 | 07 | 07 | 2.7 | 2.00 | 1.48 | 1.48 | 4.1 | 7.7 | 9.0 | 930 | 2200 | 2730 | 4.49 | 10.07 | 12.11 | 3.50 | A | |
| 16 | 10 | 07 | 07 | 3.1 | 1.88 | 1.39 | 1.39 | 4.1 | 7.8 | 9.1 | 930 | 2229 | 2760 | 4.49 | 10.20 | 12.24 | 3.50 | A | |
| 18 | 10 | 07 | 07 | 3.4 | 1.82 | 1.35 | 1.35 | 4.1 | 7.9 | 9.2 | 940 | 2257 | 2790 | 4.54 | 10.33 | 12.38 | 3.50 | A | |
| 22 | *10 | *07 | *07 | 3.8 | 1.70 | 1.26 | 1.26 | 4.2 | 8.0 | 9.3 | 950 | 2286 | 2820 | 4.59 | 10.46 | 12.51 | 3.50 | A | |
| 24 | *10 | *07 | *07 | 4.1 | 1.57 | 1.16 | 1.16 | 4.2 | 8.0 | 9.3 | 950 | 2286 | 2820 | 4.59 | 10.46 | 12.51 | 3.50 | A | |
| 13 | 13 | 07 | 07 | 2.6 | 2.56 | 1.39 | 1.39 | 4.1 | 7.9 | 9.2 | 940 | 2257 | 2790 | 4.54 | 10.33 | 12.38 | 3.50 | A | |
| 16 | 13 | 07 | 07 | 3.0 | 2.43 | 1.31 | 1.31 | 4.2 | 8.0 | 9.3 | 950 | 2286 | 2820 | 4.59 | 10.46 | 12.51 | 3.50 | A | |
| 18 | 13 | 07 | 07 | 3.1 | 2.33 | 1.26 | 1.26 | 4.2 | 8.0 | 9.3 | 950 | 2286 | 2820 | 4.59 | 10.46 | 12.51 | 3.50 | A | |
| 22 | *13 | *07 | *07 | 3.5 | 2.16 | 1.17 | 1.17 | 4.2 | 8.0 | 9.3 | 950 | 2286 | 2820 | 4.59 | 10.46 | 12.51 | 3.50 | A | |
| 24 | *13 | *07 | *07 | 3.8 | 2.00 | 1.08 | 1.08 | 4.2 | 8.0 | 9.3 | 950 | 2286 | 2820 | 4.59 | 10.46 | 12.51 | 3.50 | A | |
| 16 | 16 | 07 | 07 | 2.8 | 2.77 | 1.23 | 1.23 | 4.2 | 8.0 | 9.3 | 950 | 2286 | 2820 | 4.59 | 10.46 | 12.51 | 3.50 | A | |
| 18 | 16 | 07 | 07 | 3.0 | 2.67 | 1.19 | 1.19 | 4.2 | 8.0 | 9.3 | 950 | 2286 | 2820 | 4.59 | 10.46 | 12.51 | 3.50 | A | |
| 18 | 18 | 07 | 07 | 2.9 | 2.86 | 1.14 | 1.14 | 4.2 | 8.0 | 9.3 | 950 | 2286 | 2820 | 4.59 | 10.46 | 12.51 | 3.50 | A | |
| 10 | 10 | 10 | 07 | 2.0 | 2.03 | 2.03 | 1.50 | 4.1 | 7.6 | 8.9 | 900 | 2171 | 2700 | 4.35 | 9.94 | 11.98 | 3.50 | A | |
| 13 | 10 | 10 | 07 | 2.6 | 1.90 | 1.90 | 1.41 | 4.1 | 7.8 | 9.1 | 930 | 2229 | 2760 | 4.49 | 10.20 | 12.24 | 3.50 | A | |
| 16 | 10 | 10 | 07 | 3.0 | 1.79 | 1.79 | 1.33 | 4.1 | 7.9 | 9.2 | 940 | 2257 | 2790 | 4.54 | 10.33 | 12.38 | 3.50 | A | |
| 18 | 10 | 10 | 07 | 3.2 | 1.74 | 1.74 | 1.29 | 4.2 | 8.0 | 9.3 | 950 | 2286 | 2820 | 4.59 | 10.46 | 12.51 | 3.50 | A | |
| 22 | *10 | *10 | *07 | 3.6 | 1.61 | 1.61 | 1.19 | 4.2 | 8.0 | 9.3 | 950 | 2286 | 2820 | 4.59 | 10.46 | 12.51 | 3.50 | A | |
| 24 | *10 | *10 | *07 | 3.9 | 1.49 | 1.49 | 1.10 | 4.2 | 8.0 | 9.3 | 950 | 2286 | 2820 | 4.59 | 10.46 | 12.51 | 3.50 | A | |
| 13 | 13 | 10 | 07 | 2.4 | 2.45 | 1.79 | 1.32 | 4.2 | 8.0 | 9.3 | 950 | 2286 | 2820 | 4.59 | 10.46 | 12.51 | 3.50 | A | |
| 16 | 13 | 10 | 07 | 2.8 | 2.29 | 1.67 | 1.24 | 4.2 | 8.0 | 9.3 | 950 | 2286 | 2820 | 4.59 | 10.46 | 12.51 | 3.50 | A | |
| 18 | 13 | 10 | 07 | 3.0 | 2.21 | 1.61 | 1.19 | 4.2 | 8.0 | 9.3 | 950 | 2286 | 2820 | 4.59 | 10.46 | 12.51 | 3.50 | A | |
| 22 | *13 | *10 | *07 | 3.3 | 2.06 | 1.50 | 1.11 | 4.2 | 8.0 | 9.3 | 950 | 2286 | 2820 | 4.59 | 10.46 | 12.51 | 3.50 | A | |
| 24 | *13 | *10 | *07 | 3.7 | 1.91 | 1.39 | 1.03 | 4.2 | 8.0 | 9.3 | 950 | 2286 | 2820 | 4.59 | 10.46 | 12.51 | 3.50 | A | |
| 16 | 16 | 10 | 07 | 2.6 | 2.63 | 1.58 | 1.17 | 4.2 | 8.0 | 9.3 | 950 | 2286 | 2820 | 4.59 | 10.46 | 12.51 | 3.50 | A | |
| 18 | 16 | 10 | 07 | 2.8 | 2.54 | 1.52 | 1.13 | 4.2 | 8.0 | 9.3 | 950 | 2286 | 2820 | 4.59 | 10.46 | 12.51 | 3.50 | A | |
| 18 | 18 | 10 | 07 | 2.7 | 2.72 | 1.47 | 1.09 | 4.2 | 8.0 | 9.3 | 950 | 2286 | 2820 | 4.59 | 10.46 | 12.51 | 3.50 | A | |
| 13 | 13 | 13 | 07 | 2.3 | 2.26 | 2.26 | 1.22 | 4.2 | 8.0 | 9.3 | 950 | 2286 | 2820 | 4.59 | 10.46 | 12.51 | 3.50 | A | |
| 16 | 13 | 13 | 07 | 2.6 | 2.13 | 2.13 | 1.15 | 4.2 | 8.0 | 9.3 | 950 | 2286 | 2820 | 4.59 | 10.46 | 12.51 | 3.50 | A | |
| 18 | 13 | 13 | 07 | 2.8 | 2.06 | 2.06 | 1.11 | 4.2 | 8.0 | 9.3 | 950 | 2286 | 2820 | 4.59 | 10.46 | 12.51 | 3.50 | A | |
| 16 | 16 | 13 | 07 | 2.4 | 2.45 | 2.01 | 1.09 | 4.2 | 8.0 | 9.3 | 950 | 2286 | 2820 | 4.59 | 10.46 | 12.51 | 3.50 | A | |
| 18 | 16 | 13 | 07 | 2.6 | 2.37 | 1.95 | 1.05 | 4.2 | 8.0 | 9.3 | 950 | 2286 | 2820 | 4.59 | 10.46 | 12.51 | 3.50 | A | |
| 10 | 10 | 10 | 10 | 2.0 | 1.98 | 1.98 | 1.98 | 4.1 | 7.9 | 9.2 | 940 | 2257 | 2790 | 4.54 | 10.33 | 12.38 | 3.50 | A | |
| 13 | 10 | 10 | 10 | 2.5 | 1.81 | 1.81 | 1.81 | 4.1 | 7.9 | 9.2 | 940 | 2257 | 2790 | 4.54 | 10.33 | 12.38 | 3.50 | A | |
| 16 | 10 | 10 | 10 | 2.9 | 1.71 | 1.71 | 1.71 | 4.2 | 8.0 | 9.3 | 950 | 2286 | 2820 | 4.59 | 10.46 | 12.51 | 3.50 | A | |
| 18 | 10 | 10 | 10 | 3.1 | 1.65 | 1.65 | 1.65 | 4.2 | 8.0 | 9.3 | 950 | 2286 | 2820 | 4.59 | 10.46 | 12.51 | 3.50 | A | |
| 22 | *10 | *10 | *10 | 3.4 | 1.53 | 1.53 | 1.53 | 4.2 | 8.0 | 9.3 | 950 | 2286 | 2820 | 4.59 | 10.46 | 12.51 | 3.50 | A | |
| 24 | *10 | *10 | *10 | 3.7 | 1.42 | 1.42 | 1.42 | 4.2 | 8.0 | 9.3 | 950 | 2286 | 2820 | 4.59 | 10.46 | 12.51 | 3.50 | A | |
| 13 | 13 | 10 | 10 | 2.3 | 2.31 | 1.69 | 1.69 | 4.2 | 8.0 | 9.3 | 950 | 2286 | 2820 | 4.59 | 10.46 | 12.51 | 3.50 | A | |
| 16 | 13 | 10 | 10 | 2.6 | 2.18 | 1.59 | 1.59 | 4.2 | 8.0 | 9.3 | 950 | 2286 | 2820 | 4.59 | 10.46 | 12.51 | 3.50 | A | |
| 16 | 16 | 10 | 10 | 2.5 | 2.50 | 1.50 | 1.50 | 4.2 | 8.0 | 9.3 | 950 | 2286 | 2820 | 4.59 | 10.46 | 12.51 | 3.50 | A | |
| 18 | 13 | 10 | 10 | 2.8 | 2.10 | 1.53 | 1.53 | 4.2 | 8.0 | 9.3 | 950 | 2286 | 2820 | 4.59 | 10.46 | 12.51 | 3.50 | A | |
| 18 | 16 | 10 | 10 | 2.7 | 2.42 | 1.45 | 1.45 | 4.2 | 8.0 | 9.3 | 950 | 2286 | 2820 | 4.59 | 10.46 | 12.51 | 3.50 | A | |
| 13 | 13 | 13 | 10 | 2.1 | 2.14 | 2.14 | 1.57 | 4.2 | 8.0 | 9.3 | 950 | 2286 | 2820 | 4.59 | 10.46 | 12.51 | 3.50 | A | |
| 16 | 13 | 13 | 10 | 2.5 | 2.03 | 2.03 | 1.48 | 4.2 | 8.0 | 9.3 | 950 | 2286 | 2820 | 4.59 | 10.46 | 12.51 | 3.50 | A | |
| 18 | 13 | 13 | 10 | 2.6 | 1.96 | 1.96 | 1.43 | 4.2 | 8.0 | 9.3 | 950 | 2286 | 2820 | 4.59 | 10.46 | 12.51 | 3.50 | A | |
| 13 | 13 | 13 | 13 | 2.0 | 2.00 | 2.00 | 2.00 | 4.2 | 8.0 | 9.3 | 950 | 2286 | 2820 | 4.59 | 10.46 | 12.51 | 3.50 | A | |

* Applicable FCU are only SKV-E

Outdoor unit **RAS-4M27UAV-E** **Combination ratings (size 27) heat pump**

Performances in Heating mode

| Operating status | Combination | | | Unit capacity (kW) | | | | Cooling capacity (kW) | | | Power input (W) | | Operating current (A) | | | EER | label | | |
|------------------|-------------|--------|--------|--------------------|--------|--------|--------|-----------------------|------|-------|-----------------|------|-----------------------|------|------|-------|-------|-------|-------|
| | Unit A | Unit B | Unit C | Unit D | Unit A | Unit B | Unit C | Unit D | Min. | Rated | Max. | Min. | Rated | Max. | Min. | | | Rated | Max. |
| | 07 | 07 | 07 | 07 | 2.09 | 2.09 | 2.09 | 2.09 | 3.0 | 8.4 | 11.5 | 470 | 1792 | 2560 | 2.27 | | | 8.20 | 11.36 |
| 10 | 07 | 07 | 07 | 2.80 | 1.89 | 1.89 | 1.89 | 3.0 | 8.5 | 11.5 | 470 | 1812 | 2560 | 2.27 | 8.29 | 11.36 | 4.67 | A | |
| 13 | 07 | 07 | 07 | 3.30 | 1.78 | 1.78 | 1.78 | 3.0 | 8.6 | 11.6 | 480 | 1850 | 2580 | 2.32 | 8.47 | 11.45 | 4.67 | A | |
| 16 | 07 | 07 | 07 | 3.53 | 1.73 | 1.73 | 1.73 | 3.0 | 8.7 | 11.6 | 490 | 1869 | 2580 | 2.37 | 8.55 | 11.45 | 4.67 | A | |
| 18 | 07 | 07 | 07 | 3.75 | 1.69 | 1.69 | 1.69 | 3.0 | 8.8 | 11.6 | 490 | 1889 | 2580 | 2.37 | 8.65 | 11.45 | 4.67 | A | |
| 22 | *07 | *07 | *07 | 4.17 | 1.61 | 1.61 | 1.61 | 3.0 | 9.0 | 11.7 | 500 | 1927 | 2600 | 2.42 | 8.82 | 11.54 | 4.67 | A | |
| 24 | *07 | *07 | *07 | 4.50 | 1.50 | 1.50 | 1.50 | 3.0 | 9.0 | 11.7 | 500 | 1927 | 2600 | 2.42 | 8.82 | 11.54 | 4.67 | A | |
| 10 | 10 | 07 | 07 | 2.58 | 2.58 | 1.74 | 1.74 | 3.0 | 8.6 | 11.6 | 480 | 1850 | 2580 | 2.32 | 8.47 | 11.45 | 4.67 | A | |
| 13 | 10 | 07 | 07 | 3.03 | 2.43 | 1.64 | 1.64 | 3.0 | 8.7 | 11.6 | 490 | 1869 | 2580 | 2.37 | 8.55 | 11.45 | 4.67 | A | |
| 16 | 10 | 07 | 07 | 3.26 | 2.37 | 1.60 | 1.60 | 3.0 | 8.8 | 11.6 | 490 | 1889 | 2580 | 2.37 | 8.65 | 11.45 | 4.67 | A | |
| 18 | 10 | 07 | 07 | 3.47 | 2.31 | 1.56 | 1.56 | 3.0 | 8.9 | 11.7 | 500 | 1908 | 2600 | 2.42 | 8.73 | 11.54 | 4.67 | A | |
| 22 | *10 | *07 | *07 | 3.84 | 2.20 | 1.48 | 1.48 | 3.0 | 9.0 | 11.7 | 500 | 1927 | 2600 | 2.42 | 8.82 | 11.54 | 4.67 | A | |
| 24 | *10 | *07 | *07 | 4.17 | 2.06 | 1.39 | 1.39 | 3.0 | 9.0 | 11.7 | 500 | 1927 | 2600 | 2.42 | 8.82 | 11.54 | 4.67 | A | |
| 13 | 13 | 07 | 07 | 2.89 | 2.89 | 1.56 | 1.56 | 3.0 | 8.9 | 11.7 | 500 | 1908 | 2600 | 2.42 | 8.73 | 11.54 | 4.67 | A | |
| 16 | 13 | 07 | 07 | 3.11 | 2.83 | 1.53 | 1.53 | 3.0</ | | | | | | | | | | | |

Outdoor unit RAS-5M34UAV-E1 Combination ratings (size 34) heat pump

Performances in Cooling mode

| Operating status | Combination | | | | | Unit capacity (kW) | | | | | Cooling capacity (kW) | | | Power input (W) | | | Operating current (A) | | | EER | label |
|------------------|-------------|--------|--------|--------|--------|--------------------|--------|--------|--------|--------|-----------------------|-------|------|-----------------|-------|------|-----------------------|-------|-------|------|-------|
| | Unit A | Unit B | Unit C | Unit D | Unit E | Unit A | Unit B | Unit C | Unit D | Unit E | Min. | Rated | Max. | Min. | Rated | Max. | Min. | Rated | Max. | | |
| | Unit A | Unit B | Unit C | Unit D | Unit E | Unit A | Unit B | Unit C | Unit D | Unit E | Min. | Rated | Max. | Min. | Rated | Max. | Min. | Rated | Max. | | |
| 07 | 07 | 07 | 07 | 07 | 07 | 1.96 | 1.96 | 1.96 | 1.96 | 1.96 | 3.7 | 9.8 | 10.8 | 950 | 2855 | 3630 | 4.59 | 13.11 | 16.10 | 3.42 | A |
| 10 | 07 | 07 | 07 | 07 | 07 | 2.50 | 1.85 | 1.85 | 1.85 | 1.85 | 3.7 | 9.9 | 10.9 | 950 | 2894 | 3670 | 4.59 | 13.24 | 16.28 | 3.42 | A |
| 13 | 07 | 07 | 07 | 07 | 07 | 3.13 | 1.69 | 1.69 | 1.69 | 1.69 | 3.7 | 9.9 | 10.9 | 950 | 2894 | 3670 | 4.59 | 13.24 | 16.28 | 3.42 | A |
| 16 | 07 | 07 | 07 | 07 | 07 | 3.56 | 1.58 | 1.58 | 1.58 | 1.58 | 3.7 | 9.9 | 10.9 | 950 | 2894 | 3670 | 4.59 | 13.24 | 16.28 | 3.42 | A |
| 18 | 07 | 07 | 07 | 07 | 07 | 3.81 | 1.52 | 1.52 | 1.52 | 1.52 | 3.7 | 9.9 | 10.9 | 950 | 2894 | 3670 | 4.59 | 13.24 | 16.28 | 3.42 | A |
| 10 | 10 | 07 | 07 | 07 | 07 | 2.34 | 2.34 | 1.74 | 1.74 | 1.74 | 3.7 | 9.9 | 10.9 | 950 | 2894 | 3670 | 4.59 | 13.24 | 16.28 | 3.42 | A |
| 13 | 10 | 07 | 07 | 07 | 07 | 2.95 | 2.16 | 1.60 | 1.60 | 1.60 | 3.7 | 9.9 | 10.9 | 950 | 2894 | 3670 | 4.59 | 13.24 | 16.28 | 3.42 | A |
| 16 | 10 | 07 | 07 | 07 | 07 | 3.38 | 2.03 | 1.50 | 1.50 | 1.50 | 3.7 | 9.9 | 10.9 | 950 | 2894 | 3670 | 4.59 | 13.24 | 16.28 | 3.42 | A |
| 18 | 10 | 07 | 07 | 07 | 07 | 3.61 | 1.95 | 1.45 | 1.45 | 1.45 | 3.7 | 9.9 | 10.9 | 950 | 2894 | 3670 | 4.59 | 13.24 | 16.28 | 3.42 | A |
| 13 | 13 | 07 | 07 | 07 | 07 | 2.73 | 2.73 | 1.48 | 1.48 | 1.48 | 3.7 | 9.9 | 10.9 | 950 | 2894 | 3670 | 4.59 | 13.24 | 16.28 | 3.42 | A |
| 16 | 13 | 07 | 07 | 07 | 07 | 3.14 | 2.58 | 1.39 | 1.39 | 1.39 | 3.7 | 9.9 | 10.9 | 950 | 2894 | 3670 | 4.59 | 13.24 | 16.28 | 3.42 | A |
| 18 | 13 | 07 | 07 | 07 | 07 | 3.37 | 2.49 | 1.35 | 1.35 | 1.35 | 3.7 | 9.9 | 10.9 | 950 | 2894 | 3670 | 4.59 | 13.24 | 16.28 | 3.42 | A |
| 16 | 16 | 07 | 07 | 07 | 07 | 2.97 | 2.97 | 1.32 | 1.32 | 1.32 | 3.7 | 9.9 | 10.9 | 950 | 2894 | 3670 | 4.59 | 13.24 | 16.28 | 3.42 | A |
| 18 | 16 | 07 | 07 | 07 | 07 | 3.19 | 2.87 | 1.28 | 1.28 | 1.28 | 3.7 | 9.9 | 10.9 | 950 | 2894 | 3670 | 4.59 | 13.24 | 16.28 | 3.42 | A |
| 10 | 10 | 10 | 07 | 07 | 07 | 2.21 | 2.21 | 2.21 | 1.64 | 1.64 | 3.7 | 9.9 | 10.9 | 950 | 2894 | 3670 | 4.59 | 13.24 | 16.28 | 3.42 | A |
| 13 | 10 | 10 | 07 | 07 | 07 | 2.80 | 2.04 | 1.51 | 1.51 | 1.51 | 3.7 | 9.9 | 10.9 | 950 | 2894 | 3670 | 4.59 | 13.24 | 16.28 | 3.42 | A |
| 16 | 10 | 10 | 07 | 07 | 07 | 3.21 | 1.92 | 1.42 | 1.42 | 1.42 | 3.7 | 9.9 | 10.9 | 950 | 2894 | 3670 | 4.59 | 13.24 | 16.28 | 3.42 | A |
| 18 | 10 | 10 | 07 | 07 | 07 | 3.44 | 1.86 | 1.38 | 1.38 | 1.38 | 3.7 | 9.9 | 10.9 | 950 | 2894 | 3670 | 4.59 | 13.24 | 16.28 | 3.42 | A |
| 13 | 13 | 13 | 07 | 07 | 07 | 2.43 | 2.43 | 2.43 | 1.31 | 1.31 | 3.7 | 9.9 | 10.9 | 950 | 2894 | 3670 | 4.59 | 13.24 | 16.28 | 3.42 | A |
| 16 | 13 | 13 | 07 | 07 | 07 | 2.80 | 2.30 | 2.30 | 1.25 | 1.25 | 3.7 | 9.9 | 10.9 | 950 | 2894 | 3670 | 4.59 | 13.24 | 16.28 | 3.42 | A |
| 18 | 13 | 13 | 07 | 07 | 07 | 3.02 | 2.23 | 2.23 | 1.21 | 1.21 | 3.7 | 9.9 | 10.9 | 950 | 2894 | 3670 | 4.59 | 13.24 | 16.28 | 3.42 | A |
| 16 | 16 | 10 | 07 | 07 | 07 | 2.84 | 2.84 | 1.70 | 1.26 | 1.26 | 3.7 | 9.9 | 10.9 | 950 | 2894 | 3670 | 4.59 | 13.24 | 16.28 | 3.42 | A |
| 18 | 16 | 10 | 07 | 07 | 07 | 3.06 | 2.75 | 1.65 | 1.22 | 1.22 | 3.7 | 9.9 | 10.9 | 950 | 2894 | 3670 | 4.59 | 13.24 | 16.28 | 3.42 | A |
| 16 | 16 | 13 | 07 | 07 | 07 | 2.67 | 2.67 | 2.19 | 1.19 | 1.19 | 3.7 | 9.9 | 10.9 | 950 | 2894 | 3670 | 4.59 | 13.24 | 16.28 | 3.42 | A |
| 18 | 16 | 13 | 07 | 07 | 07 | 2.88 | 2.59 | 2.13 | 1.15 | 1.15 | 3.7 | 9.9 | 10.9 | 950 | 2894 | 3670 | 4.59 | 13.24 | 16.28 | 3.42 | A |
| 10 | 10 | 10 | 10 | 07 | 07 | 2.09 | 2.09 | 2.09 | 1.55 | 1.55 | 3.7 | 9.9 | 10.9 | 950 | 2894 | 3670 | 4.59 | 13.24 | 16.28 | 3.42 | A |
| 13 | 10 | 10 | 10 | 07 | 07 | 2.65 | 1.94 | 1.94 | 1.43 | 1.43 | 3.7 | 9.9 | 10.9 | 950 | 2894 | 3670 | 4.59 | 13.24 | 16.28 | 3.42 | A |
| 16 | 10 | 10 | 10 | 07 | 07 | 3.05 | 1.83 | 1.83 | 1.36 | 1.36 | 3.7 | 9.9 | 10.9 | 950 | 2894 | 3670 | 4.59 | 13.24 | 16.28 | 3.42 | A |
| 18 | 10 | 10 | 10 | 07 | 07 | 3.28 | 1.77 | 1.77 | 1.31 | 1.31 | 3.7 | 9.9 | 10.9 | 950 | 2894 | 3670 | 4.59 | 13.24 | 16.28 | 3.42 | A |
| 13 | 13 | 10 | 10 | 07 | 07 | 2.48 | 2.48 | 1.81 | 1.81 | 1.34 | 3.7 | 9.9 | 10.9 | 950 | 2894 | 3670 | 4.59 | 13.24 | 16.28 | 3.42 | A |
| 16 | 13 | 10 | 10 | 07 | 07 | 2.86 | 2.35 | 1.71 | 1.71 | 1.27 | 3.7 | 9.9 | 10.9 | 950 | 2894 | 3670 | 4.59 | 13.24 | 16.28 | 3.42 | A |
| 18 | 13 | 10 | 10 | 07 | 07 | 3.07 | 2.28 | 1.66 | 1.66 | 1.23 | 3.7 | 9.9 | 10.9 | 950 | 2894 | 3670 | 4.59 | 13.24 | 16.28 | 3.42 | A |
| 16 | 16 | 10 | 10 | 07 | 07 | 2.72 | 2.72 | 1.63 | 1.63 | 1.21 | 3.7 | 9.9 | 10.9 | 950 | 2894 | 3670 | 4.59 | 13.24 | 16.28 | 3.42 | A |
| 13 | 13 | 13 | 10 | 07 | 07 | 2.32 | 2.32 | 2.32 | 1.69 | 1.25 | 3.7 | 9.9 | 10.9 | 950 | 2894 | 3670 | 4.59 | 13.24 | 16.28 | 3.42 | A |
| 16 | 13 | 13 | 10 | 07 | 07 | 2.68 | 2.21 | 2.21 | 1.61 | 1.19 | 3.7 | 9.9 | 10.9 | 950 | 2894 | 3670 | 4.59 | 13.24 | 16.28 | 3.42 | A |
| 18 | 16 | 13 | 10 | 07 | 07 | 2.56 | 2.56 | 2.11 | 1.54 | 1.14 | 3.7 | 9.9 | 10.9 | 950 | 2894 | 3670 | 4.59 | 13.24 | 16.28 | 3.42 | A |
| 13 | 13 | 13 | 13 | 07 | 07 | 2.18 | 2.18 | 2.18 | 1.18 | 1.18 | 3.7 | 9.9 | 10.9 | 950 | 2894 | 3670 | 4.59 | 13.24 | 16.28 | 3.42 | A |
| 16 | 13 | 13 | 13 | 07 | 07 | 2.53 | 2.08 | 2.08 | 1.13 | 1.13 | 3.7 | 9.9 | 10.9 | 950 | 2894 | 3670 | 4.59 | 13.24 | 16.28 | 3.42 | A |
| 18 | 16 | 13 | 13 | 07 | 07 | 2.42 | 2.42 | 1.99 | 1.08 | 1.08 | 3.7 | 9.9 | 10.9 | 950 | 2894 | 3670 | 4.59 | 13.24 | 16.28 | 3.42 | A |
| 10 | 10 | 10 | 10 | 10 | 10 | 1.98 | 1.98 | 1.98 | 1.98 | 1.98 | 3.7 | 9.9 | 10.9 | 950 | 2894 | 3670 | 4.59 | 13.24 | 16.28 | 3.42 | A |
| 13 | 10 | 10 | 10 | 10 | 10 | 2.53 | 1.84 | 1.84 | 1.84 | 1.84 | 3.7 | 9.9 | 10.9 | 950 | 2894 | 3670 | 4.59 | 13.24 | 16.28 | 3.42 | A |
| 16 | 10 | 10 | 10 | 10 | 10 | 2.91 | 1.75 | 1.75 | 1.75 | 1.75 | 3.7 | 9.9 | 10.9 | 950 | 2894 | 3670 | 4.59 | 13.24 | 16.28 | 3.42 | A |
| 18 | 10 | 10 | 10 | 10 | 10 | 3.13 | 1.69 | 1.69 | 1.69 | 1.69 | 3.7 | 9.9 | 10.9 | 950 | 2894 | 3670 | 4.59 | 13.24 | 16.28 | 3.42 | A |
| 13 | 13 | 10 | 10 | 10 | 10 | 2.36 | 2.36 | 1.72 | 1.72 | 1.72 | 3.7 | 9.9 | 10.9 | 950 | 2894 | 3670 | 4.59 | 13.24 | 16.28 | 3.42 | A |
| 16 | 13 | 10 | 10 | 10 | 10 | 2.73 | 2.25 | 1.64 | 1.64 | 1.64 | 3.7 | 9.9 | 10.9 | 950 | 2894 | 3670 | 4.59 | 13.24 | 16.28 | 3.42 | A |
| 18 | 13 | 10 | 10 | 10 | 10 | 2.95 | 2.18 | 1.59 | 1.59 | 1.59 | 3.7 | 9.9 | 10.9 | 950 | 2894 | 3670 | 4.59 | 13.24 | 16.28 | 3.42 | A |
| 16 | 16 | 10 | 10 | 10 | 10 | 2.61 | 2.61 | 1.56 | 1.56 | 1.56 | 3.7 | 9.9 | 10.9 | 950 | 2894 | 3670 | 4.59 | 13.24 | 16.28 | 3.42 | A |
| 13 | 13 | 13 | 10 | 10 | 10 | 2.22 | 2.22 | 2.22 | 1.62 | 1.62 | 3.7 | 9.9 | 10.9 | 950 | 2894 | 3670 | 4.59 | 13.24 | 16.28 | 3.42 | A |
| 16 | 13 | 13 | 10 | 10 | 10 | 2.58 | 2.12 | 2.12 | 1.55 | 1.55 | 3.7 | 9.9 | 10.9 | 950 | 2894 | 3670 | 4.59 | 13.24 | 16.28 | 3.42 | A |
| 18 | 13 | 13 | 10 | 10 | 10 | 2.78 | 2.06 | 2.06 | 1.50 | 1.50 | 3.7 | 9.9 | 10.9 | 950 | 2894 | 3670 | 4.59 | 13.24 | 16.28 | 3.42 | A |
| 16 | 16 | 13 | 10 | 10 | 10 | 2.49 | 2.49 | 2.04 | 1.49 | 1.49 | 3.7 | 10.0 | 11 | 950 | 2923 | 3700 | 4.59 | 13.38 | 16.42 | 3.42 | A |
| 13 | 13 | 13 | 13 | 10 | 10 | 2.09 | 2.09 | 2.09 | 1.53 | 1.53 | 3.7 | 9.9 | 10.9 | 950 | 2894 | 3670 | 4.59 | 13.24 | 16.28 | 3.42 | A |
| 16 | 13 | 13 | 13 | 10 | 10 | 2.46 | 2.02 | 2.02 | 1.48 | 1.48 | 3.7 | 10.0 | 11 | 950 | 2923 | 3700 | 4.59 | 13.38 | 16.42 | 3.42 | A |
| 18 | 13 | 13 | 13 | 10 | 10 | 2.66 | 1.97 | 1.97 | 1.44 | 1.44 | 3.7 | 10.0 | 11 | 950 | 2923 | 3700 | 4.59 | 13.38 | 16.42 | 3.42 | A |
| 16 | 16 | 13 | 13 | 10 | 10 | 2.36 | 2.36 | 1.94 | 1.94 | 1.41 | 3.7 | 10.0 | 11 | 950 | 2923 | 3700 | 4.59 | 13.38 | 16.42 | 3.42 | A |
| 13 | 13 | 13 | 13 | 10 | 10 | 2.00 | 2.00 | 2.00 | 2.00 | 2.00 | 3.7 | 10.0 | 11 | 950 | 2923 | 3700 | 4.59 | 13.38 | 16.42 | 3.42 | A |
| 16 | 13 | 13 | 13 | 10 | 10 | 2.33 | 1.92 | 1.92 | 1.92 | 1.92 | 3.7 | 10.0 | 11 | 950 | 2923 | 3700 | 4.59 | 13.38 | 16.42 | 3.42 | A |
| 18 | 13 | 13 | 13 | 10 | 10 | 2.59 | 1.83 | 1.83 | 1.43 | 1.43 | 3.7 | 10.0 | 11 | 950 | 2923 | 3700 | 4.59 | 13.38 | 16.42 | 3.42 | A |
| 22 | 10 | 07 | 07 | 07 | 07 | 4.08 | 1.84 | 1.36 | 1.36 | 1.36 | 3.7 | 10.0 | 11 | 950 | 2923 | 3700 | 4.59 | 13.38 | 16.42 | 3.42 | A |
| 22 | 10 | 07 | 07 | 07 | 07 | 3.90 | 1.75 | 1.75 | 1.30 | 1.30 | 3.7 | 10.0 | 11 | 950 | 2923 | 3700 | 4.59 | 13.38 | 16.42 | 3.42 | A |
| 22 | 10 | 10 | 07 | 07 | 07 | 3.73 | 1.68 | 1.68 | 1.24 | 1.24 | 3.7 | 10.0 | 11 | 950 | 2923 | 3700 | 4.59 | 13.38 | 16.42 | 3.42 | A |
| 22 | 10 | 10 | 10 | 07 | 07 | 3.57 | 1.61 | 1.61 | 1.61 | 1.61 | 3.7 | 10.0 | 11 | 950 | 2923 | 3700 | 4.59 | 13.38 | 16.42 | 3.42 | A |
| 22 | 13 | 07 | 07 | 07 | 07 | 3.82 | 2.36 | 1.27 | 1.27 | 1.27 | 3.7 | 10.0 | 11 | 950 | 2923 | 3700 | 4.59 | 13.38 | 16.42 | 3.42 | A |
| 22 | 13 | 10 | 07 | 07 | 0 | | | | | | | | | | | | | | | | |