

**TOSHIBA**  
AIR CONDITIONING

**MiNi-SMMS**  
WHEN COMMERCIAL MEETS RESIDENTIAL



MiNi-SMMS

## Toshiba solutions

Toshiba offers a solution for all applications: residential, light commercial and larger commercial buildings. Residential indoor units are designed to blend perfectly with all interiors and incorporate advanced filtration systems to deliver optimum indoor air quality. For small commercial premises, products are designed to deliver top performance combined with energy efficiency.

For larger applications, VRF systems combine flexibility, energy efficiency and respect for the environment, with a wide choice of stylish indoor units.

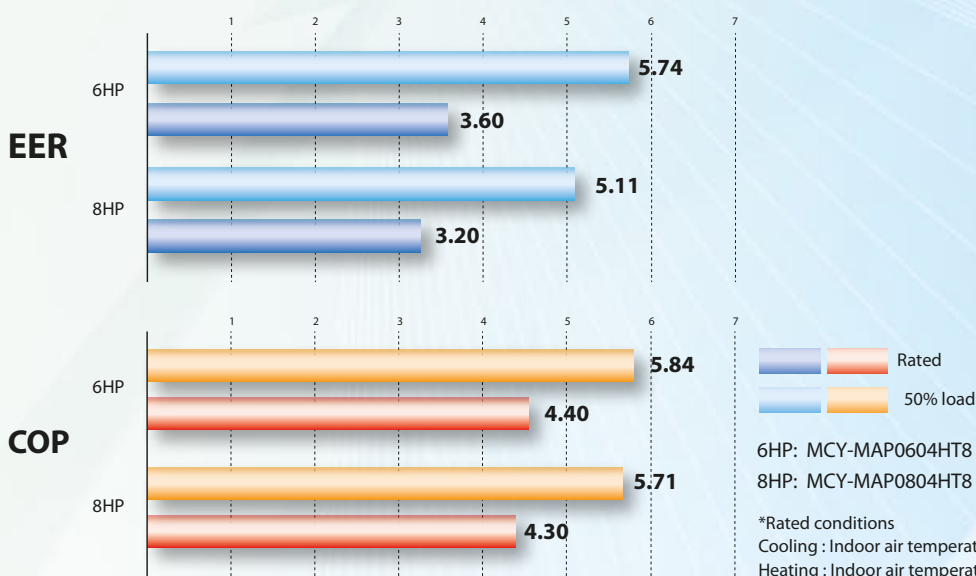
## Absolute comfort

Toshiba's commitment to society drives a company-wide focus on attention to the details through every stage of the development process, from design to user field tests. Installations using our products and systems therefore feature a high standard of indoor air quality, sound levels, energy savings, and environmental awareness.



## Energy-efficient performance for greater eco-consciousness

Adopting the highly efficient DC twin-rotary compressors and advanced vector-controlled inverters realize a EER of 5.74 (under 50% partial load, 6HP). Greater operating performance is now possible when operating under a constant load.



## Toshiba's unique energy-efficient air conditioning innovations and technologies deliver high energy savings.

### DC fan motor

- Highly efficient DC motor
- Sine wave drive

### Heat exchanger

High-efficiency R410A heat-transfer tube



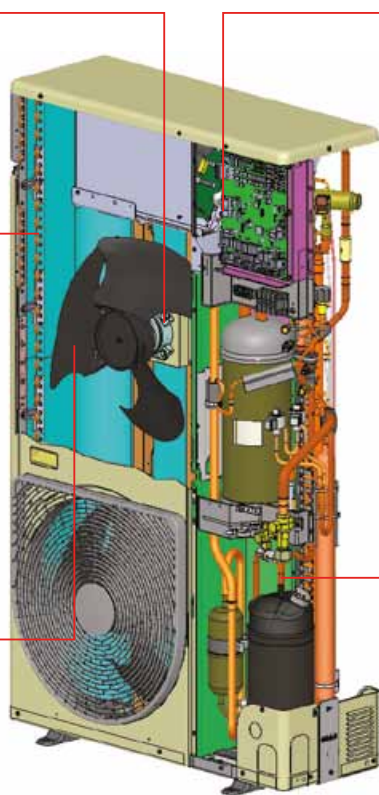
Configuration of the finned heat-transfer tube

### Bat wing fan

High-pressure low-volume fan

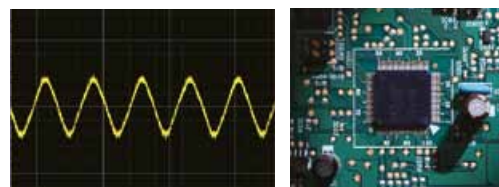


The bat wing fan realizes low sound level.



### Vector-controlled inverter

The inverter boosts efficiency by controlling R410A and a twin-rotary DC compressor.



Smooth sine curve realizes higher efficiency and less noise. Efficient circuit built-in; new PIM

Vector IPDU control changes the motor current wave to a smooth sine pattern so that noise emitted from the drive units is greatly reduced.

### Twin-rotary DC compressor

Increased, wide range efficiency is realized.



- DC driven motor with rare-earth magnet
- Compact
  - Higher efficiency
  - Higher power motor torque

- Precise manufacturing technology in the compression parts
- Higher efficiency (in wide range)
  - Higher reliability



## Controls



**Wired Controller**  
RBC-AMS51E-EN  
• Backlight  
• Weekly schedule



**Wired Controller**  
RBC-AMS41E (with weekly schedule)  
RBC-AMT32E (without schedule)



**Simple wired controller**  
RBC-AS21E2



**Remote sensor**  
TCB-TC21LE2



**Wireless remote controller kit & sensor unit (receiver unit)**

\*The wireless remote control cannot be connected to Concealed duct high static pressure type or Fresh air intake indoor unit type.



**RBC-AX32U(W)-E**

Integral receiver (For 4-way air discharge cassette) (MMU-AP\*\*\*2H)



**RBC-AX23UW(W)-E**

Integral receiver  
(For 2-way air discharge cassette)  
(MMU-AP\*\*\*2WH)



**RBC-AX32CE2**

Integral receiver  
(For Ceiling, 1-way air discharge cassette)  
(MMU-AP\*\*\*SH-E, MMC-AP\*\*\*H-E)



**TCB-AX32E2**

Stand alone receiver  
(For 4-way air discharge cassette, Compact 4-way cassette (600 x 600), 2-way air discharge cassette, Ceiling, Concealed duct standard, Slim duct, Floor standing cabinet, Floor standing, 1-way discharge cassette (MMU-AP\*\*\*YH-E/SH-E)



**ON-OFF controller**  
TCB-CC163TLE2



**Central remote controller**  
TCB-SC642TLE2



**Schedule Timer**  
TCB-EXS21TLE



**Smart Manager**  
BMS-SM1280HTLE

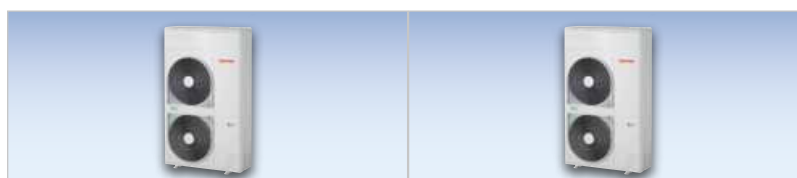
## Outdoor unit specifications



### 1-phase model

### Technical specifications

Equivalent HP		4HP	5HP	6HP	
Model name	50Hz	<b>MCY-MAP0401HT</b>	<b>MCY-MAP0501HT</b>	<b>MCY-MAP0601HT</b>	
Cooling capacity <sup>*1</sup>	(kW)	12.1	14.0	15.5	
Heating capacity <sup>*1</sup>	(kW)	12.5	16.0	18.0	
Power supply		1-phase 2 wires 50Hz 220 – 240 V			
Efficiency	Cooling	EER (Energy Efficiency Ratio)	4.29	4.03	3.35
	Heating	COP (Coefficient of Performance)	4.61	4.00	3.71
External dimensions (Height / Width / Depth) (Weight)	(mm)	1340 / 900 / 320 (117 kg)			
Refrigerant piping Specifications	Connecting port dia.	Gas side (OD)	(mm)	15.9	19.1
		Liquid side (OD)	(mm)	9.5	
	Total Piping (Liquid pipe)	(m)	180(150 <sup>*2</sup> )		
	Furthest Piping (indoor to outdoor)	(m)	100(65 <sup>*2</sup> )		
	Max equivalent length of main pipe	(m)	65(50 <sup>*2</sup> ) (Outdoor to 1st branch)		
	Furthest Indoor piping to 1st branch	(m)	35m (15 <sup>*2</sup> ) (Equivalent length)		
Height between indoor and outdoor units	(m)	30m (outdoor above), 20m (outdoor below)			
Max. no. of connected indoor units		6	8	9	
Sound pressure level (Cooling/Heating) <sup>*3</sup>	(dB(A))	49/50	50/52	51/53	



### 3-phase model

### Technical specifications

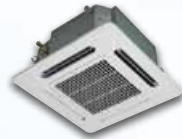
Equivalent HP		6HP	8HP		
Model name	50Hz	<b>MCY-MAP0604HT8</b>	<b>MCY-MAP0804HT8</b>		
Cooling capacity <sup>*1</sup>	(kW)	15.5	22.4		
Heating capacity <sup>*1</sup>	(kW)	18.0	25.0		
Power supply		3-phase 4 wires 50Hz 380 - 415V			
Efficiency	Cooling	EER (Energy Efficiency Ratio)	3.60	3.20	
	Heating	COP (Coefficient of Performance)	4.40	4.30	
External dimensions (Height / Width / Depth) (Weight)	(mm)	1540 / 900 / 320 (123 kg)			
Refrigerant piping Specifications	Connecting port dia.	Gas side (OD)	(mm)	19.1	22.2
		Liquid side (OD)	(mm)	9.5	
	Total Piping (Liquid pipe)	(m)	100		
	Furthest Piping (indoor to outdoor)	(m)	50m (Equivalent length: 60m)		
	Max equivalent length of main pipe	(m)	30m (Outdoor to 1st branch)		
	Furthest Indoor piping to 1st branch	(m)	20m (Equivalent length)		
Height between indoor and outdoor units	(m)	15m (Outdoor above or below indoor unit)			
Max. no. of connected indoor units		8	8		
Sound pressure level (Cooling/Heating) <sup>*3</sup>	(dB(A))	58/58	58/58		

<sup>\*1</sup> Rated conditions Cooling : Indoor air temperature 27°C DB / 19°C WB, Outdoor air temperature 35°C DB  
 Heating : Indoor air temperature 20°C DB, Outdoor air temperature 7°C DB / 6°C WB

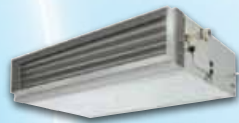
<sup>\*2</sup> When PMV kit is used

<sup>\*3</sup> Sound pressure levels measured in an anechoic chamber

## Indoor units



Cooling capacity (HP equivalent)	4-way air discharge cassette type	Compact 4-way cassette (600 × 600) type	2-way air discharge cassette type	1-way air discharge cassette type
007 type 2.2 kW (0.8HP)		MMU-AP0074MH-E	MMU-AP0072WH	MMU-AP0074YH-E
009 type 2.8 kW (1HP)	MMU-AP0092H	MMU-AP0094MH-E	MMU-AP0092WH	MMU-AP0094YH-E
012 type 3.6 kW (1.25HP)	MMU-AP0122H	MMU-AP0124MH-E	MMU-AP0122WH	MMU-AP0124YH-E
015 type 4.5 kW (1.7HP)	MMU-AP0152H	MMU-AP0154MH-E	MMU-AP0152WH	MMU-AP0154SH-E
018 type 5.6 kW (2HP)	MMU-AP0182H	MMU-AP0184MH-E	MMU-AP0182WH	MMU-AP0184SH-E
024 type 7.1 kW (2.5HP)	MMU-AP0242H		MMU-AP0242WH	MMU-AP0244SH-E
027 type 8.0 kW (3HP)	MMU-AP0272H		MMU-AP0272WH	
030 type 9.0 kW (3.2HP)	MMU-AP0302H		MMU-AP0302WH	
036 type 11.2 kW (4HP)	MMU-AP0362H		MMU-AP0362WH	
048 type 14.0 kW (5HP)	MMU-AP0482H		MMU-AP0482WH	
056 type 16.0 kW (6HP)	MMU-AP0562H		MMU-AP0562WH	



Cooling capacity (HP equivalent)	Concealed duct type	Concealed duct high static pressure type	Slim duct type
007 type 2.2 kW (0.8HP)	MMD-AP0074BH-E		MMD-AP0074SPH-E
009 type 2.8 kW (1HP)	MMD-AP0094BH-E		MMD-AP0094SPH-E
012 type 3.6 kW (1.25HP)	MMD-AP0124BH-E		MMD-AP0124SPH-E
015 type 4.5 kW (1.7HP)	MMD-AP0154BH-E		MMD-AP0154SPH-E
018 type 5.6 kW (2HP)	MMD-AP0184BH-E	MMD-AP0184H-E	MMD-AP0184SPH-E
024 type 7.1 kW (2.5HP)	MMD-AP0244BH-E	MMD-AP0244H-E	
027 type 8.0 kW (3HP)	MMD-AP0274BH-E	MMD-AP0274H-E	
030 type 9.0 kW (3.2HP)	MMD-AP0304BH-E		
036 type 11.2 kW (4HP)	MMD-AP0364BH-E	MMD-AP0364H-E	
048 type 14.0 kW (5HP)	MMD-AP0484BH-E	MMD-AP0484H-E	
056 type 16.0 kW (6HP)	MMD-AP0564BH-E		

**PMV kit (available as an option)**

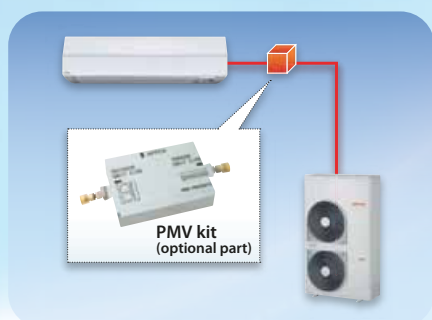
Can be located away from indoor unit to further reduce sound made by refrigerant flow in the piping



Cooling capacity (HP equivalent)	Ceiling type	High-wall type 2 series	High-wall type 3 series	Console
007 type 2.2 kW (0.8HP)		MMK-AP0074MH-E	MMK-AP0073H	MML-AP0074NH-E
009 type 2.8 kW (1HP)		MMK-AP0094MH-E	MMK-AP0093H	MML-AP0094NH-E
012 type 3.6 kW (1.25HP)		MMK-AP0124MH-E	MMK-AP0123H	MML-AP0124NH-E
015 type 4.5 kW (1.7HP)	MMC-AP0154H-E		MMK-AP0153H	MML-AP0154NH-E
018 type 5.6 kW (2HP)	MMC-AP0184H-E		MMK-AP0183H	MML-AP0184NH-E
024 type 7.1 kW (2.5HP)	MMC-AP0244H-E		MMK-AP0243H	
027 type 8.0 kW (3HP)	MMC-AP0274H-E			
030 type 9.0 kW (3.2HP)				
036 type 11.2 kW (4HP)	MMC-AP0364H-E			
048 type 14.0 kW (5HP)	MMC-AP0484H-E			
056 type 16.0 kW (6HP)				



Cooling capacity (HP equivalent)	Floor standing cabinet type	Floor standing concealed type	Floor standing type
007 type 2.2 kW (0.8HP)	MML-AP0074H-E	MML-AP0074BH-E	
009 type 2.8 kW (1HP)	MML-AP0094H-E	MML-AP0094BH-E	
012 type 3.6 kW (1.25HP)	MML-AP0124H-E	MML-AP0124BH-E	
015 type 4.5 kW (1.7HP)	MML-AP0154H-E	MML-AP0154BH-E	MMF-AP0154H-E
018 type 5.6 kW (2HP)	MML-AP0184H-E	MML-AP0184BH-E	MMF-AP0184H-E
024 type 7.1 kW (2.5HP)	MML-AP0244H-E	MML-AP0244BH-E	MMF-AP0244H-E
027 type 8.0 kW (3HP)			MMF-AP0274H-E
030 type 9.0 kW (3.2HP)			
036 type 11.2 kW (4HP)			MMF-AP0364H-E
048 type 14.0kW (5HP)			MMF-AP0484H-E
056 type 16.0 kW (6HP)			MMF-AP0564H-E



## **AHI Carrier (Australia) Pty Ltd**

[www.toshiba-aircon.com.au](http://www.toshiba-aircon.com.au)

### **Melbourne – Dealer Sales**

Level 1, 195 Chesterville Rd,  
Moorabbin, Victoria, 3189  
Phone: +61 3 9556 0128  
Fax: + 61 3 9553 6738

### **Melbourne – Commercial Sales**

34-40 Garden Boulevard  
Dingley VIC 3172  
Phone: +61 3 8551 0329  
Fax: +61 3 8551 0380

### **Sydney**

101 Silverwater Road  
Silverwater NSW 2128  
Phone: +61 2 9202 4400  
Fax: +61 2 9202 4422

### **Canberra**

Unit 2/89-91 Tennant Street  
FYSHWICK ACT 2609  
Phone: +61 2 6233 8950  
Fax: +61 2 6280 4015

## **AHI Carrier (NZ) Ltd**

[www.toshibaheatpumps.com](http://www.toshibaheatpumps.com)

Level 4, 60 Stanley Street  
Parnell, Auckland 1010  
Phone: +64 9 355 6720  
Fax: +64 9 355 6735

### **Perth**

38A Walters Drive  
Osborne Park, WA 6017  
Phone: +61 8 9205 3304  
Fax: + 61 8 9204 2074

### **Brisbane**

Unit 8, 140 Wecker Road  
Mansfield, QLD 4122  
Phone: +61 7 3006 1555  
Fax: +61 7 3006 1577

### **Adelaide**

Tenancy 1, 41 - 43 Cawthorne Street  
Thebarton, SA 5031  
Phone: +61 8 8114 1470  
Fax: +61 8 8114 1471

**TOSHIBA**  
AIR CONDITIONING

Notice: Toshiba is committed to continuously improving its product to ensure the highest quality and reliability standards, and to meet local regulations and market requirements.

All features and specifications subject to change without prior notice.

Note: All images provided in this catalogue are used for illustration purposes only.

